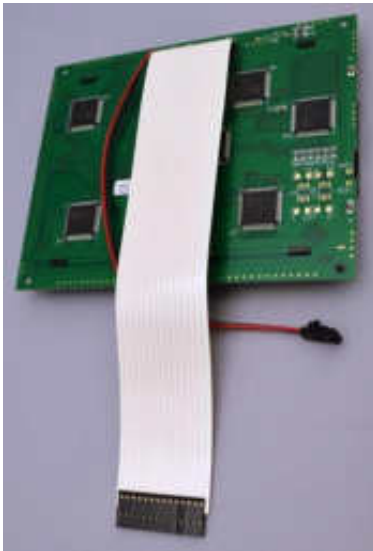


# All-in-One LCD Panel

## FOR YOUR PANELVIEW 550



MONITECH **M256128C**



Replaces the original LCD,  
backlight and fiber optic

**SUPPORTS: 550 with Keypad & Touchscreen (2711-B)**  
**550 with Touchscreen only (2711 -T)**

**MONITECH**  
PRACTICAL SOLUTIONS FOR INDUSTRIAL DISP

# Table of Contents

Page # 1) COVER

Page # 2) TABLE OF CONTENTS

Page # 3 - 8) SECTION #1 (INSTALLATION FOR 550 WITH TOUCHSCREEN & KEYPAD)

Page # 9-13) SECTION #2 (INSTALLATION FOR 550 WITH TOUCHSCREEN ONLY)

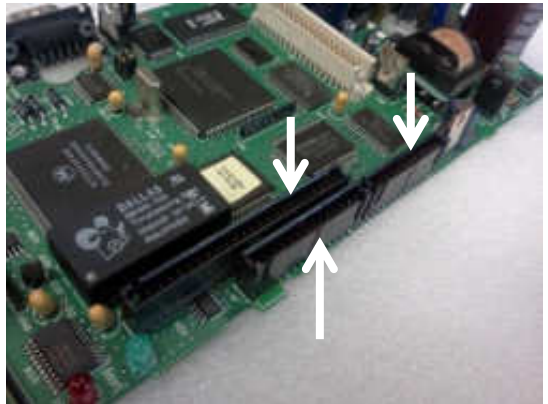
Page #14- 15) OTHER PRODUCTS AVAILABLE AT MONITECH

**MONITECH**

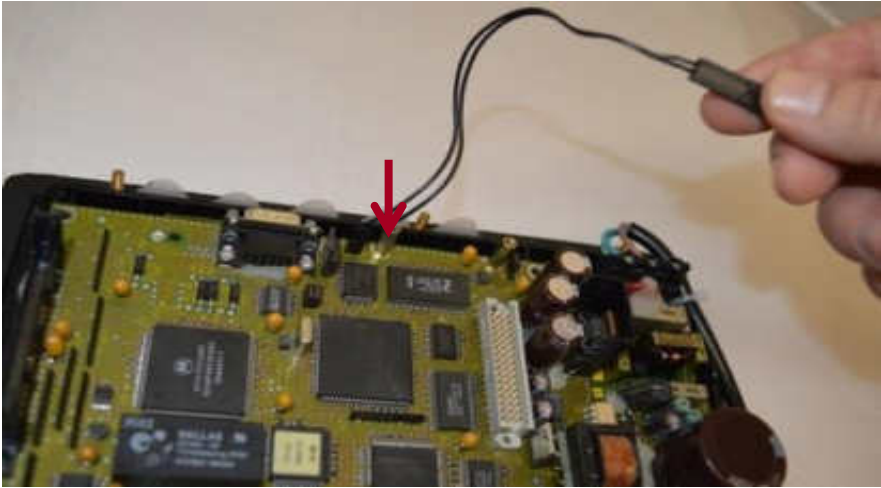
PRACTICAL SOLUTIONS FOR INDUSTRIAL DISP

## SECTION #1 : 550 WITH TOUCHSCREEN AND KEYPAD

1. After the power supply and all cables have been disconnected, and the unit has cooled, remove rear plastic bezel.
2. Remove lamp cover (4 screws).
3. Remove fiber optic and lamp. (Your All-in-One Panel will replace both.)
4. Remove back cover.
5. Disconnect ribbon cables. The touchscreen version has 3 cables, and the keypad version has two.
6. Disconnect lamp power cable extension (J4).



Later, you will replace this with the Monitech LED red-and-black cable.



7. Remove computer board (6 or 7 screws).



8. Remove the 4 screws that separate the LCD panel from the face.



9. Insert 4 stand-offs (supplied) into the 4 corners, using a 3/16 socket.



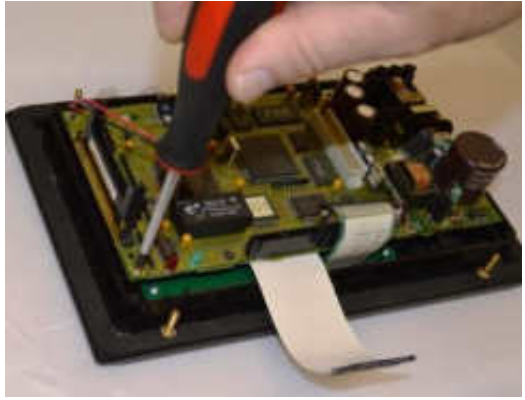
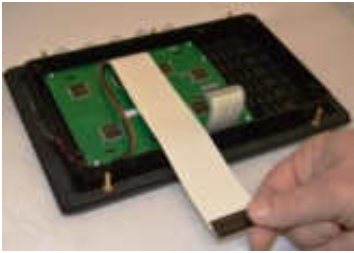
This is an important step: it ensures the new panel fits properly into the original casing.



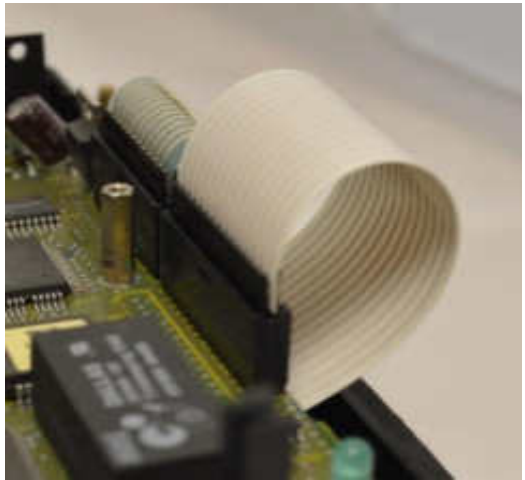
10. Attach All-in-One LCD Panel using the 4 screws supplied.



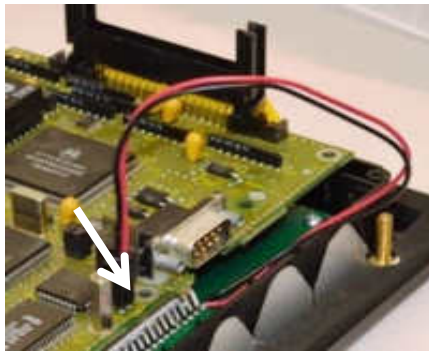
- 11.** Re-attach computer board.



- 12.** Reconnect ribbon cables.



- 13.** Plug new LED red-and-black cable into J4. Yours will be one of several variations. (See pictures on next page.)



- 14.** Reconnect power for testing.



- 15.** Check the screen. On some controllers, the polarity is reversed on J4, so the screen will be blank or dim.



**IF SCREEN IS BLANK OR DIM**

Remove LED red-and-black cable from J4 and reinstall it in reverse. Check the screen again.

**IF SCREEN IS TOO BRIGHT**

Don't worry. You can adjust it after the unit is installed into the control panel.



- 16.** When you are finished testing, disconnect power supply.
- 17.** Replace the back cover.  
Be sure to connect the ground wire.
- 18.** Reconnect power cable and reinstall complete unit.



## SECTION #2) 550 WITH TOUCHSCREEN ONLY

**1.** After the power supply and all cables have been disconnected, and the unit has cooled, remove rear plastic bezel.



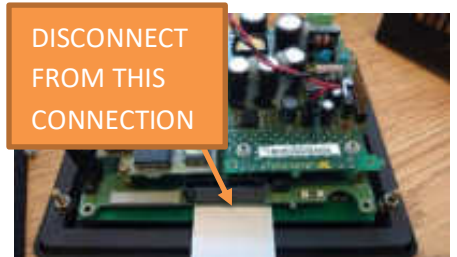
**2.** Remove lamp cover (4 screws).

**3.** Remove fiber optic and lamp. (Your All-in-One Panel will replace both.)

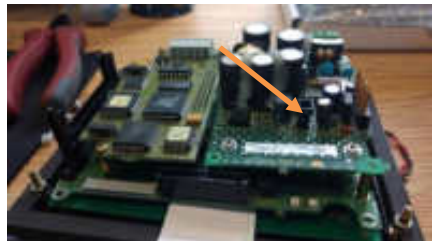


**4.** Remove back cover.

**5.** Disconnect ribbon cable.



**6.** Disconnect backlight power cable extension (backlight or J4). Later, you will replace this with Monitech LED red- and-black cable.



7. Remove computer board (4 screws).



8. Remove the 4 screws that separate the LCD panel from the face.



9. Insert 4 stand-offs (supplied in labeled **FOR 2711-T bag**) into the 4 corners, using a 3/16 socket.



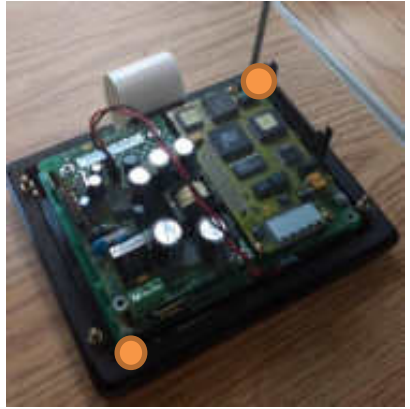
This is an important step: it ensures the new panel fits properly into the original casing.



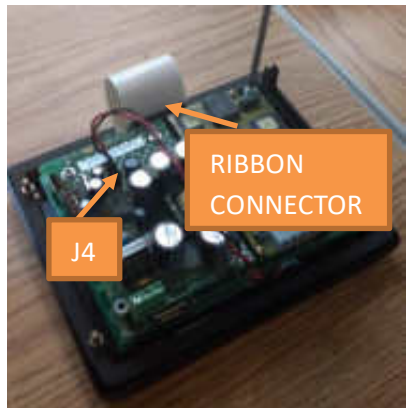
10. Attach All-in-One LCD Panel using the 4 screws with nylon in the bag labeled **FOR 2711-T**.



**11.** Re-attach computer board by using 2 Philip screws from z on corners that are orange on the picture.



**12.** Reconnect ribbon cables. Then in Plug new LED red-and-black cable into J4. Yours will be one of several variations. (See pictures on next page.)



**13.** Reconnect power for testing.

**14.** Check the screen. On some controllers, the polarity is reversed on J4, so the screen will be blank or dim.

**IF SCREEN IS BLANK OR DIM**

Remove LED red-and-black cable from J4 and reinstall it in reverse. Check the screen again.

**IF SCREEN IS TOO BRIGHT**

Don't worry. You can adjust it after the unit is installed into the control panel.



**15.** Replace the back cover.

**16.** Be sure to connect the ground wire.

**17.** When you are finished testing, disconnect power supply.

Enjoy your rejuvenated PanelView 550!  
Call us to order more replacement parts.

## Keep your PanelView 550 up and running!



LED backlight MB550E



Fiber optic MB550FOS



Fiber optic MB55FOL



Touchscreen MF550T



Keypad MF550K



Keypad-touchscreen  
MF550B

## Keep your AB PanelView's up and running!



Replacement: LCD's, Backlight's, Keypad's & Touchscreen's for the whole 550 line.



Replacement: LCD's, Backlight's, Keypad's & Touchscreen's for the whole 600 line.



Replacement: LCD's, Backlight's, Keypad's & Touchscreen's for the whole 900 line.



Replacement: LCD's, Backlight's, Keypad's & Touchscreen's for the whole 1000 line.



Replacement: CRT TO LCD CONVERSION's, Backlight's, Keypad's & Touchscreen's for the whole 1200 line.



Replacement: CRT TO LCD CONVERSION's, Backlight's, Keypad's & Touchscreen's for the whole 1400 line.

For Technical Support, Call  
**1-877-493-6105**  
[Support@Monitech.com](mailto:Support@Monitech.com)

**MONITECH**

20 Howard Place  
Kitchener, Ontario N2K 4Z4  
CANADA 519.725.222  
[www.monitech.com](http://www.monitech.com)