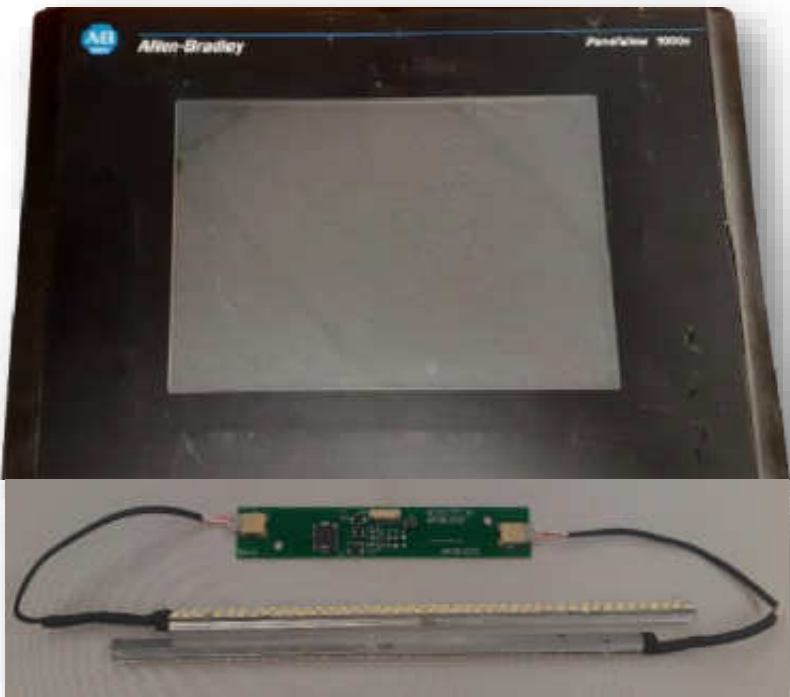




# New Backlight Inverter for Allen Bradley 1000e 2711E-K10C6, SER A, REV C



## PECAUTIONS:

 <p><b>ATTENTION</b></p>	<p>Disconnect power from the terminal before installing or replacing any components. Take care not to touch any of the exposed electronic components during installation.</p>
 <p><b>ATTENTION</b></p>	<p>Work in a static free environment and wear a properly grounded electrostatic discharge (ESD) wristband. Be careful when touching any of the exposed electronic components to prevent damage from ESD.</p>

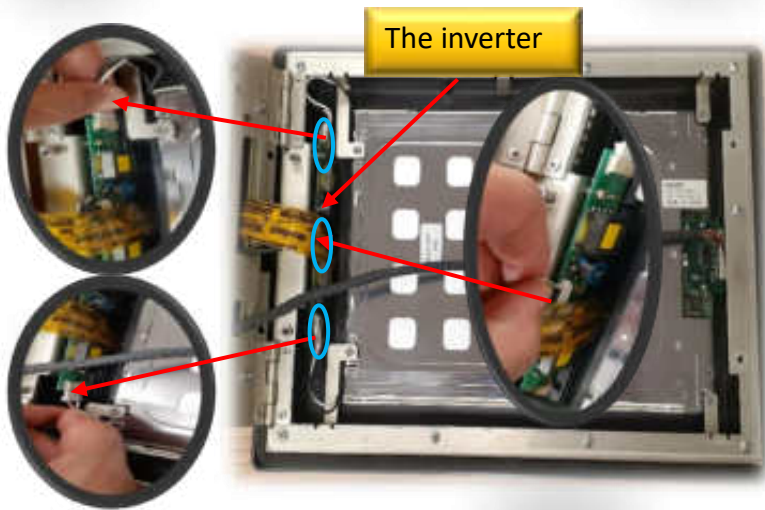
## KIT CONTENTS:

<b>Part Number</b>	<b>Item</b>	<b>QTY</b>
MPCB1000ELEDDS-V2	Inverter Board, MPCBLS520	1
LEDS1000E-V2	LED Strips	2
HARDWARE	4-40 Screws	2

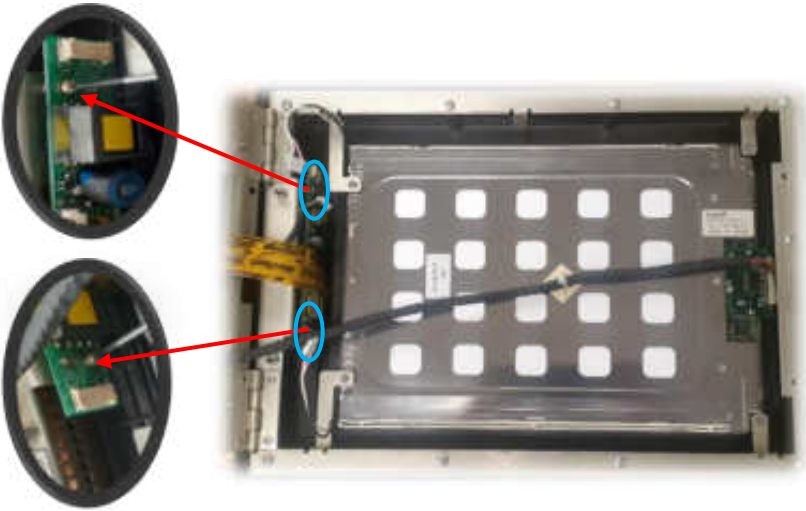
- Unscrew the 4 screws to remove the back cover of the unit.



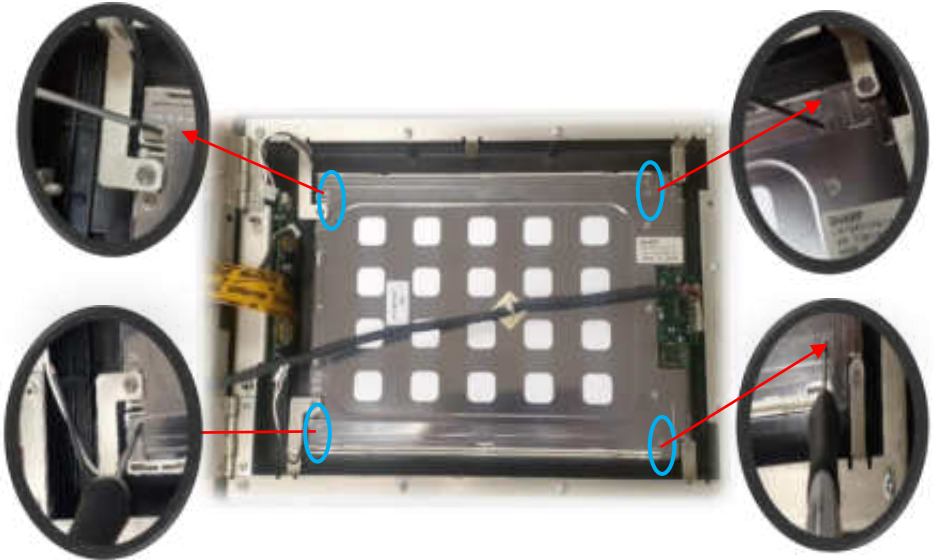
- Disconnect the CCFLS bulbs cables and then the power cable of the inverter.



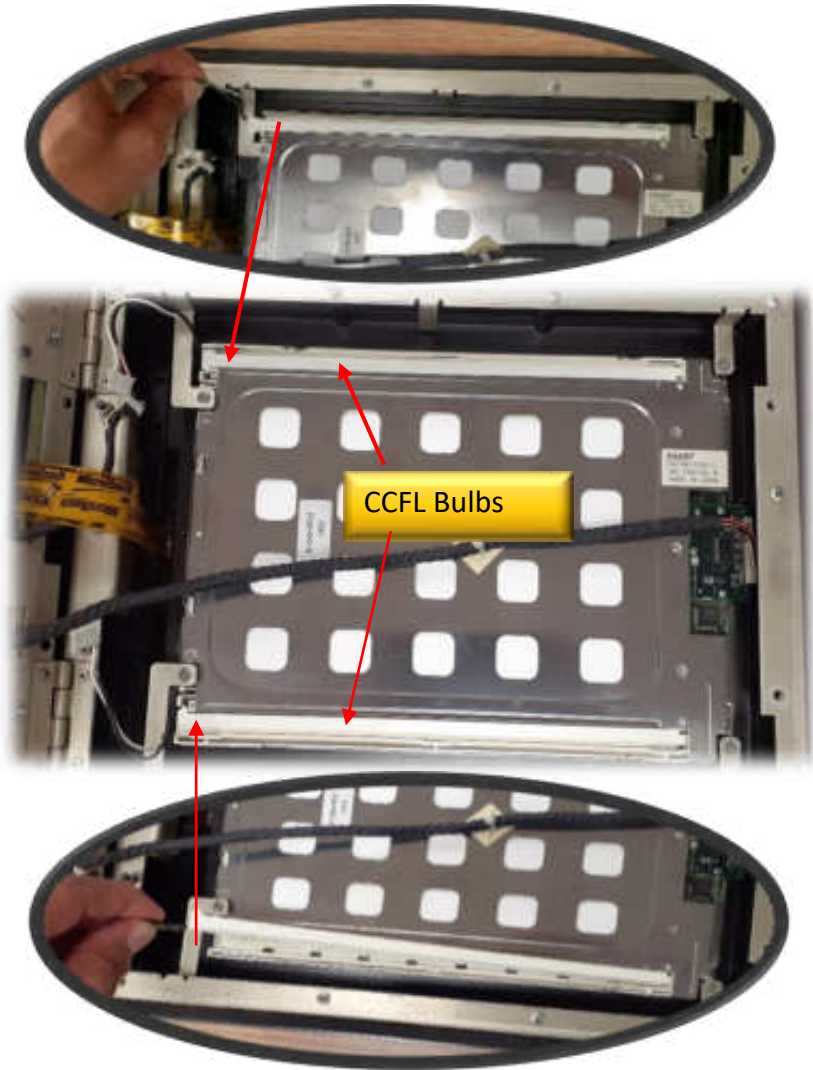
- Unscrew the 2 screws to remove the inverter.



- Unscrew the 4 screws to remove the metal covers of the CCFL bulbs.



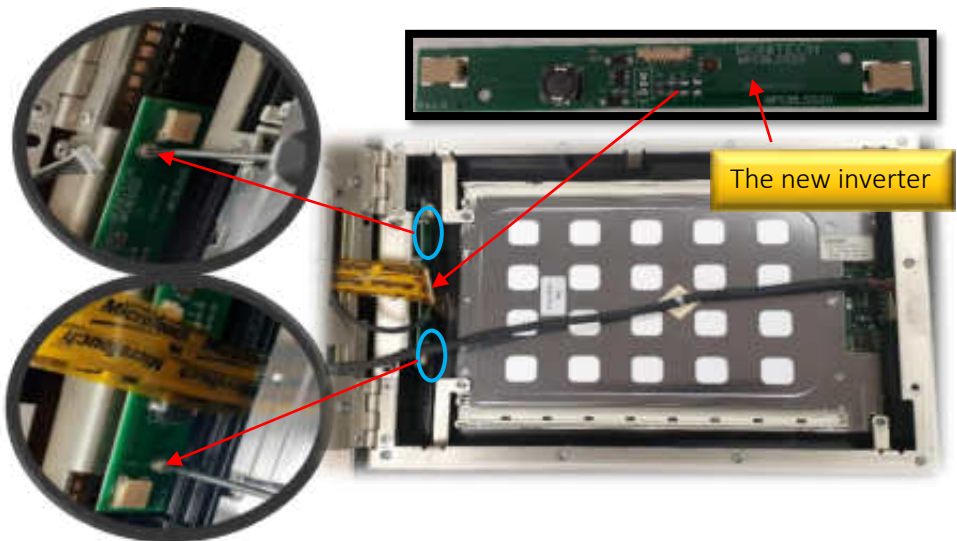
- After the metal covers of CCFL bulbs has been removed, then take off the CCFL bulbs.



- Please keep the metal covers of CCFL Bulbs with the 4 screws and then discard the CCFL bulbs.

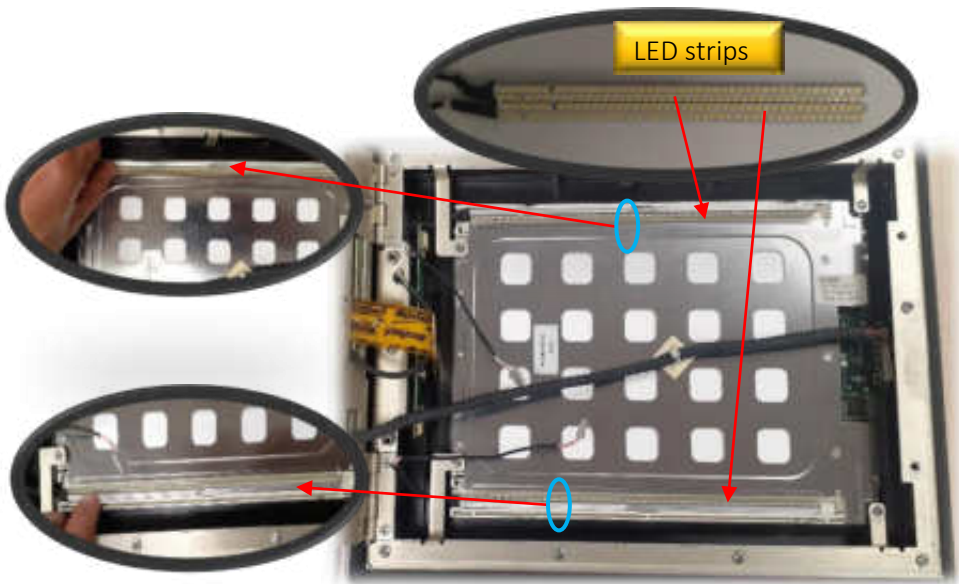


- Get the new backlight inverter with 2 LED strips. First install the inverter into the slot by using 2 screws.

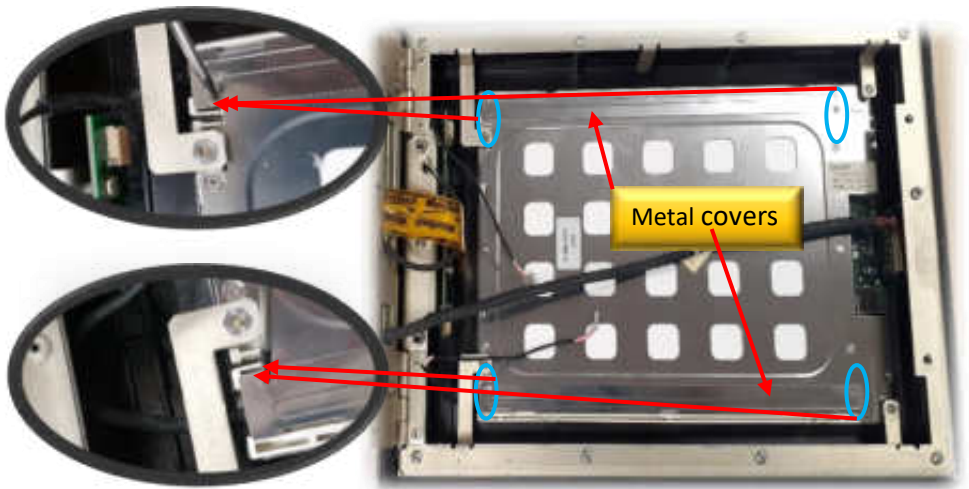




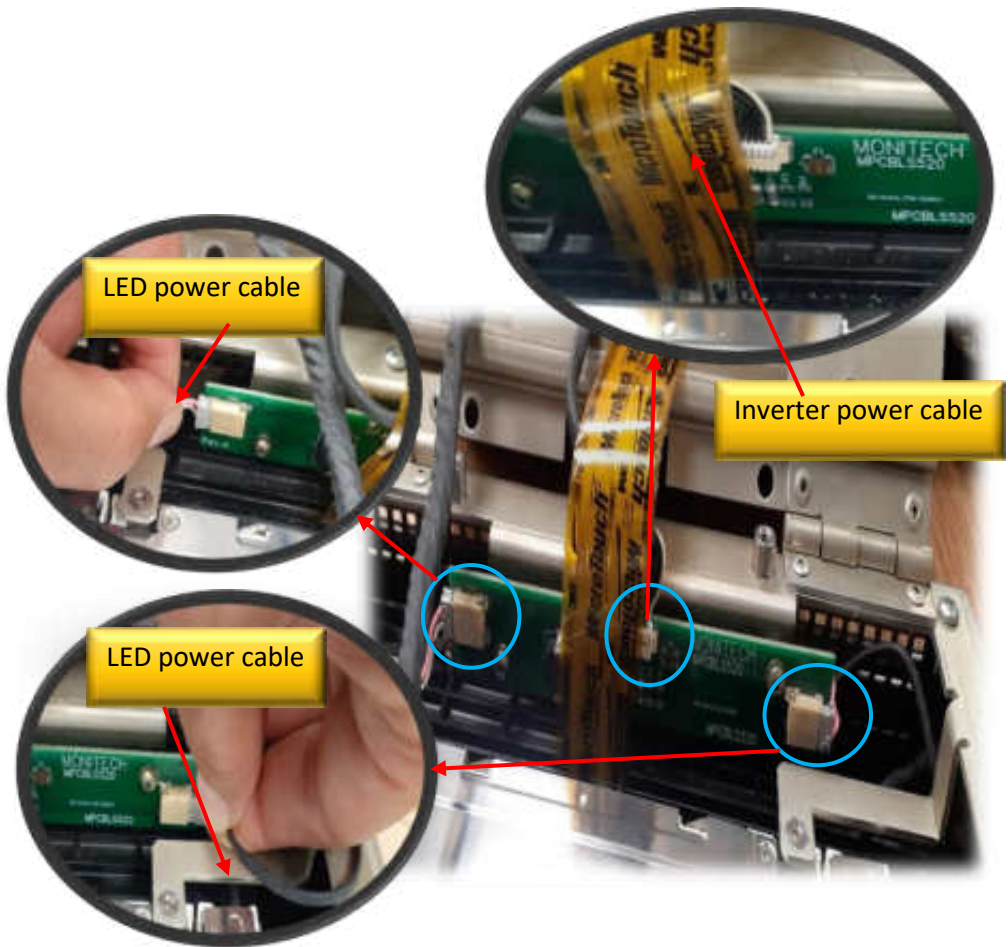
- Place the LED strips into the backlight housing as shown.



- Place the metal covers back on by using 4 screws that you save before.

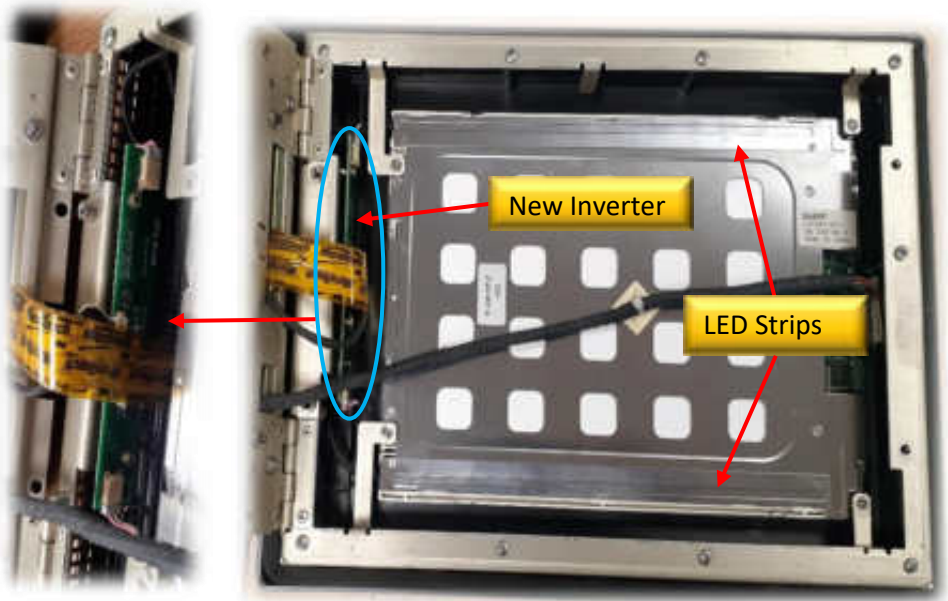


- Connect the power cable of the inverter, then insert the power harnesses of LED strips as shown.





- The final assembly of the new inverter with the LED strips.



- Before you power up the unit make sure all connections are connected properly. The unit has been powered up with the new inverter as shown.



## Keep your AB PanelView's up and running!



Replacement: LCD's, Backlight's, Keypad's & Touchscreen's for the whole 550 line.



Replacement: LCD's, Backlight's, Keypad's & Touchscreen's for the whole 600 line.



Replacement: LCD's, Backlight's, Keypad's & Touchscreen's for the whole 900 line.



Replacement: LCD's, Backlight's, Keypad's & Touchscreen's for the whole 1000 line.



Replacement: CRT TO LCD CONVERSION's, Backlight's, Keypad's & Touchscreen's for the whole 1200 line.



Replacement: CRT TO LCD CONVERSION's, Backlight's, Keypad's & Touchscreen's for the whole 1400 line.

For Technical Support, Call

**1-877-493-6105**

[Support@Monitech.com](mailto:Support@Monitech.com)

**MONITECH**  
PRACTICAL SOLUTIONS FOR INDUSTRIAL DISPLAYS

20 Howard Place  
Kitchener, Ontario N2K 4Z4  
CANADA 519.725.2222  
[www.monitech.com](http://www.monitech.com)

**MB1000ELEDDS-V2**

10