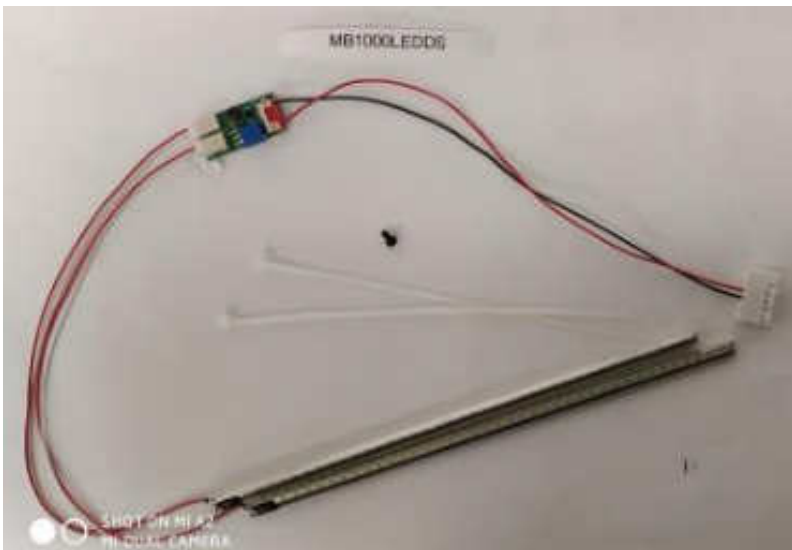


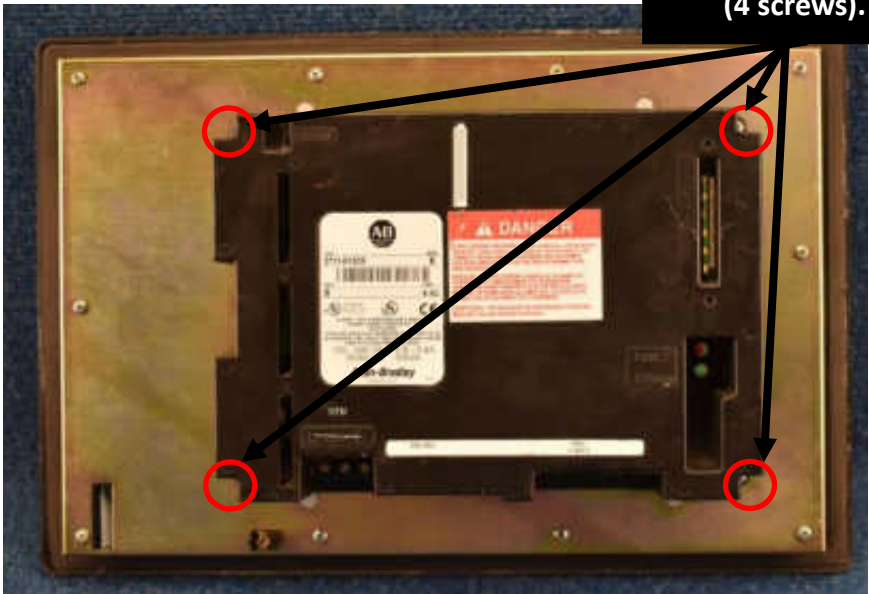
New LED backlight strips for PanelView 1000, 2711-NL6 Ser B & NL10 Ser F for Color



Original HMI of Allen-Bradley PanelView 1000 with 2711-NL6 & NL10 Color Terminal. AB PV 1000 (2711-K10C8, SER B, REV D)



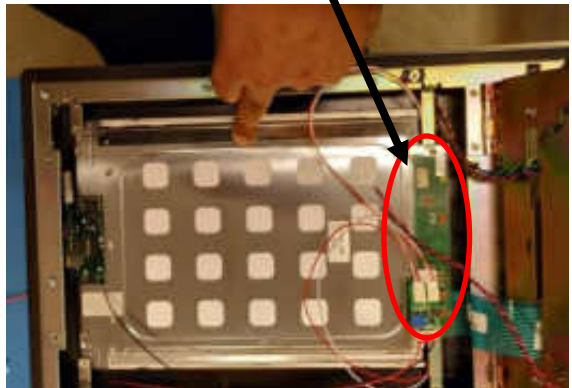
Remove back cover
(4 screws).



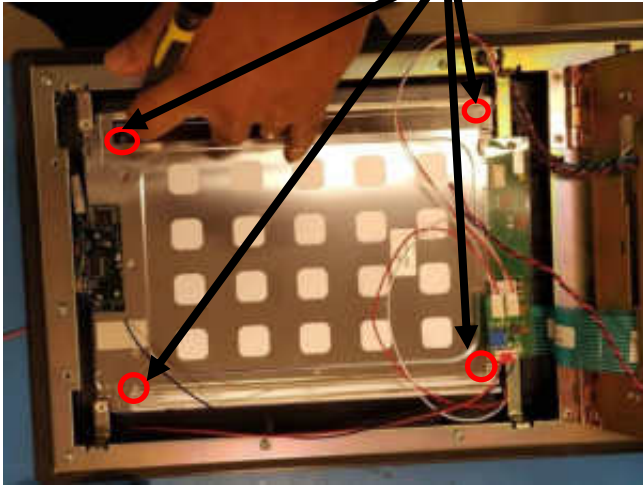
**Unscrew these
(4 screws).**



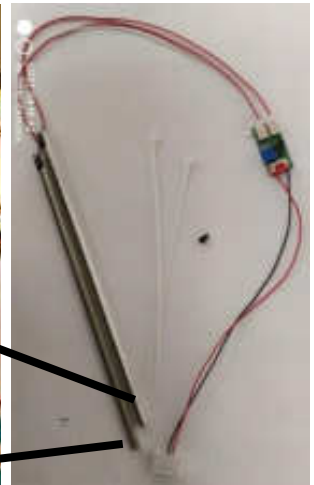
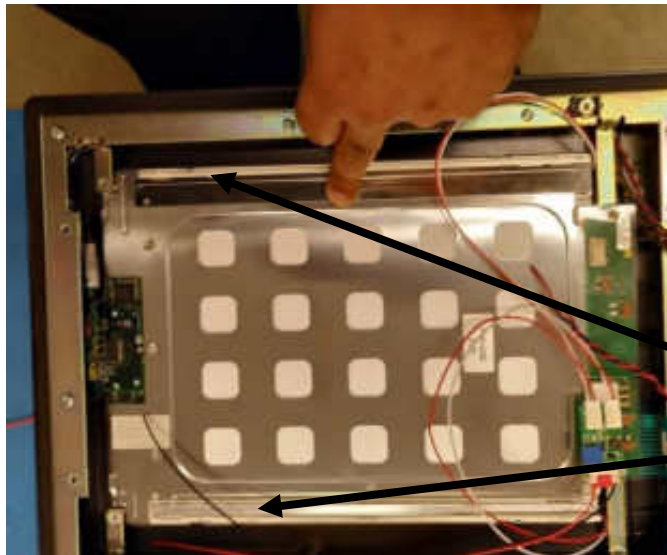
**REMOVE THE INVERTER OF THE CCFLS BULB S AND DISCONNECT
THE 6 PIN WHITE CONNETER ON THE POWER SUPPLY BOARD.**



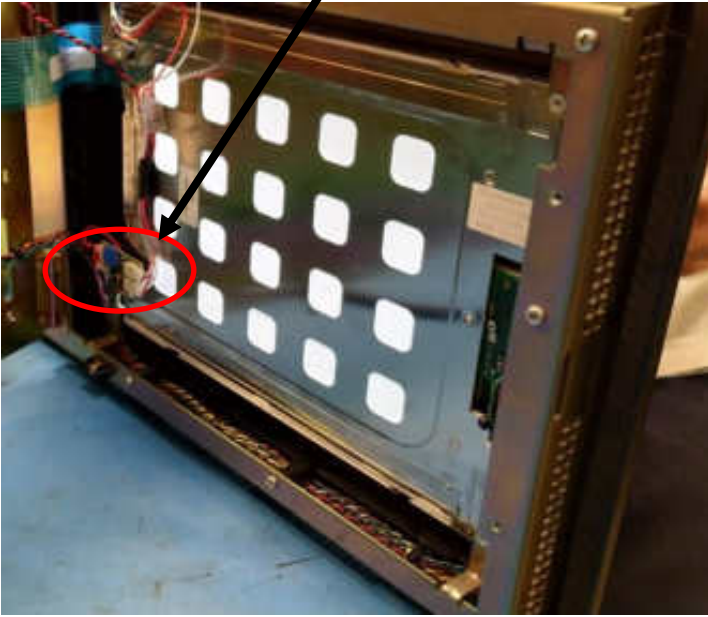
**Unscrew the metal shields holding the CCFLs in the LCD Panel.
Then remove the CCFLs out of the LCD Panel.**



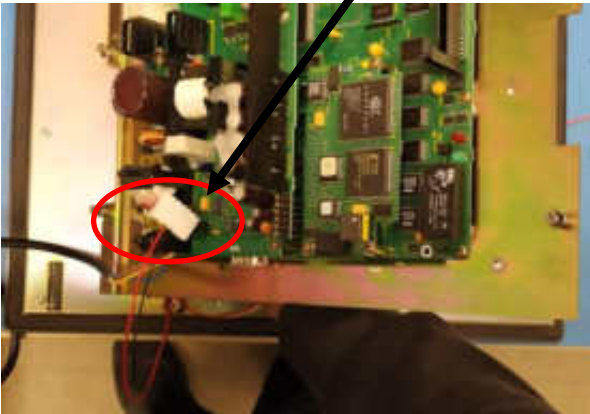
Put the New Monitech LEDs into the slots where the old CCFL Backlight were. Place the shield back on and screw it in.

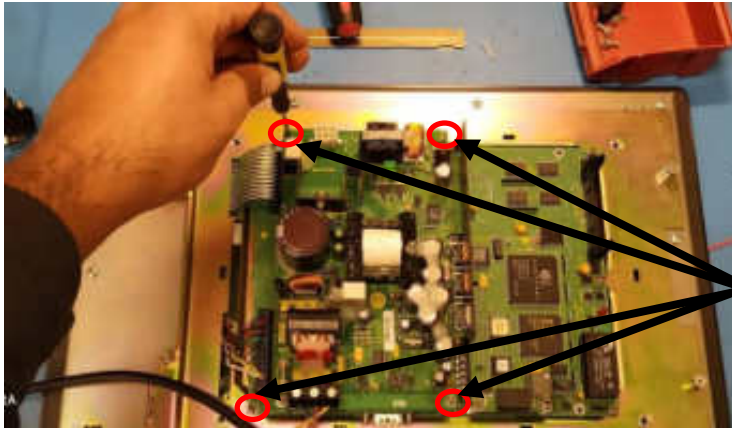


Mount the Inverter Board on to one of the screw holes that was mounting the old Inverter in place. Use the Nylon Screw and Nut the mount it.



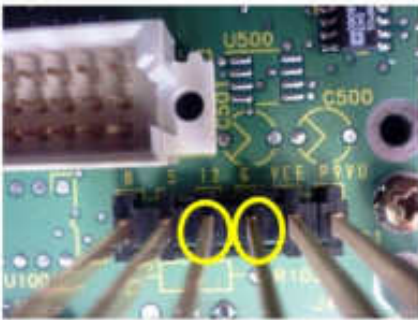
Feed the other side of the inverter cable through the hinge metal part.





Unscrew the 4 screws holding the power supply board and remove it.

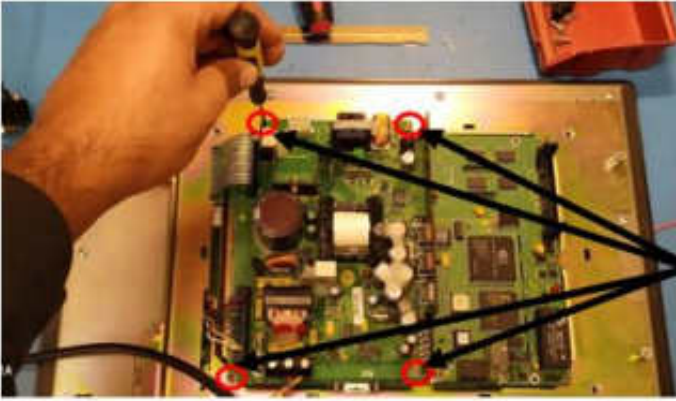
Identify 12 (12VDC) and G (ground).



Attach **red** wire to **12** and **black** wire to **G**.

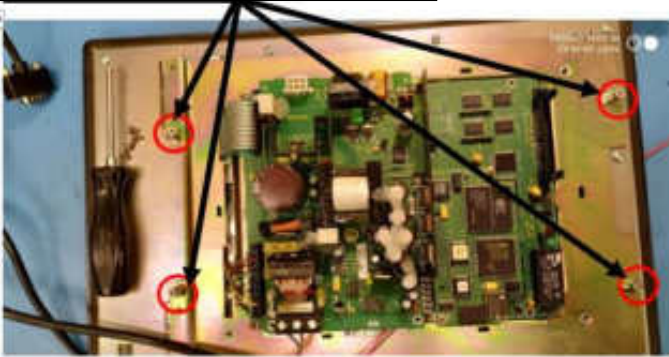


The white connector is easy to slide into the gold pins. Make sure red & black wire goes onto the 12 & G (Ground) gold pins.

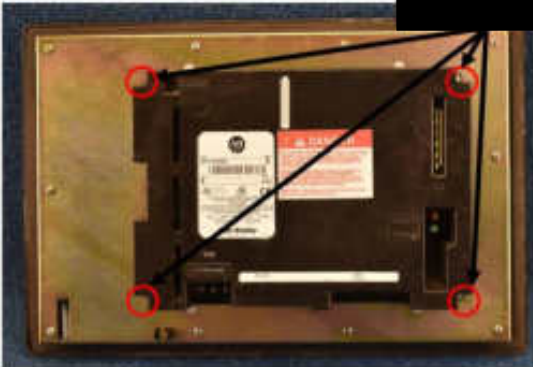


Place the Power supply board back on and mount it with the 4 screws previously removed.

Screw these (4 screws).



Screw these (4 screws).



Test the lights by providing 110 – 240 AC power to the terminal.



Now you can see!!!

MONITECH

20 Howard Place
Kitchener, Ontario N2K 4Z4
CANADA 519.725.2222
www.monitech.com

For Technical Support, Call

1877-493-6105

