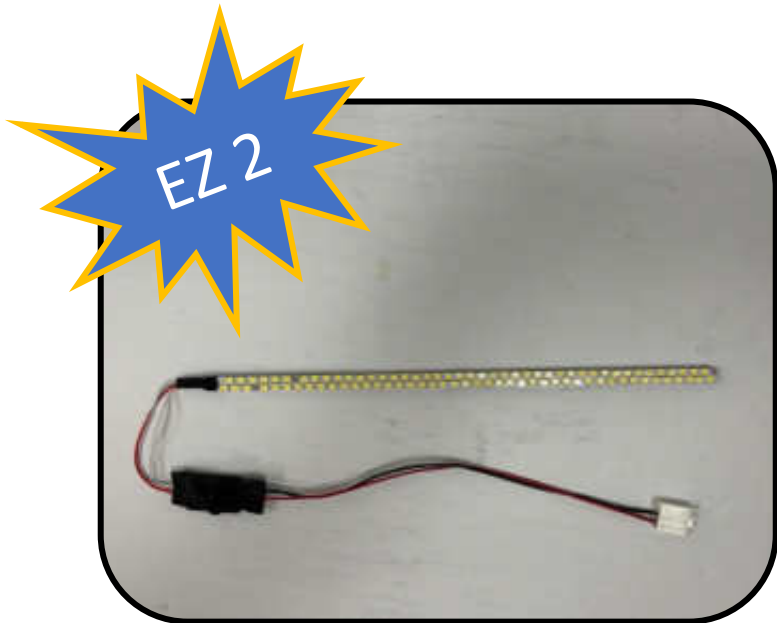


New LED backlight strips for PanelView 1000 2711-

Fitment:

T10C15 Series E & F Control Bd 77144-777-51



PECAUTIONS:



ATTENTION

Disconnect power from the terminal before installing or replacing any components. Take care not to touch any of the exposed electronic components during installation.



ATTENTION

Work in a static free environment and wear a properly grounded electrostatic discharge (ESD) wristband. Be careful when touching any of the exposed electronic components to prevent damage from ESD.

KIT CONTENTS:

Part Number	Item	QTY
MB1000LEDS-EF	LED Strip Assembly	1

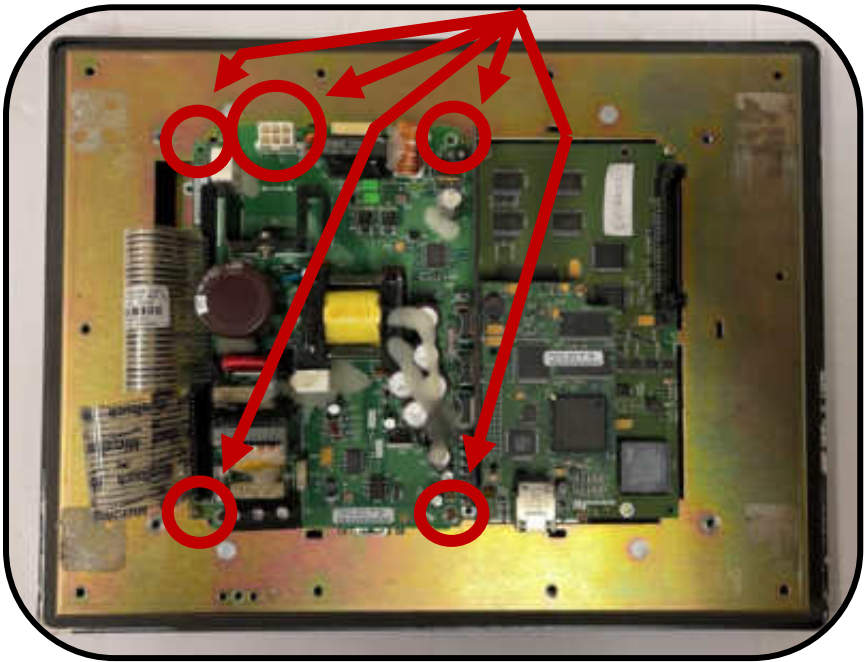
Step 1

Remove the 4
screws for the
back bezel



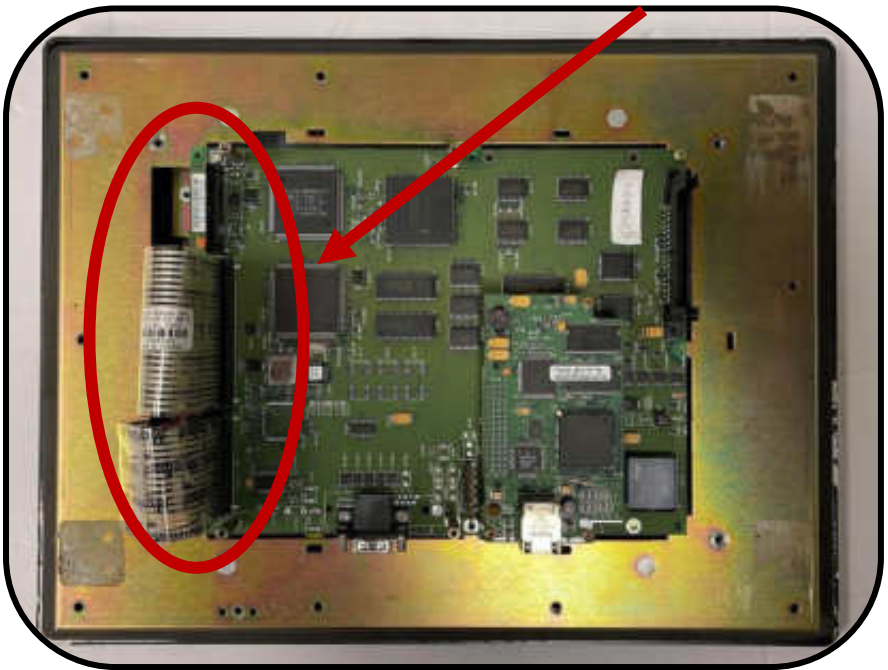
Step 2

Remove J2 and the 4 screws holding the power supply down and carefully remove the power supply board



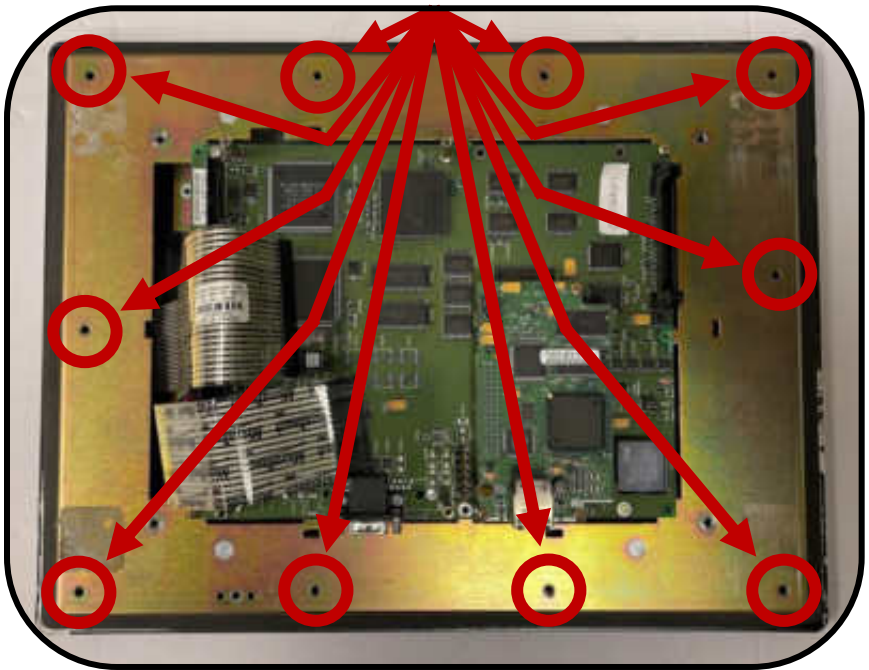
Step 3

Remove J6, J7, J8
and J9 if equipped



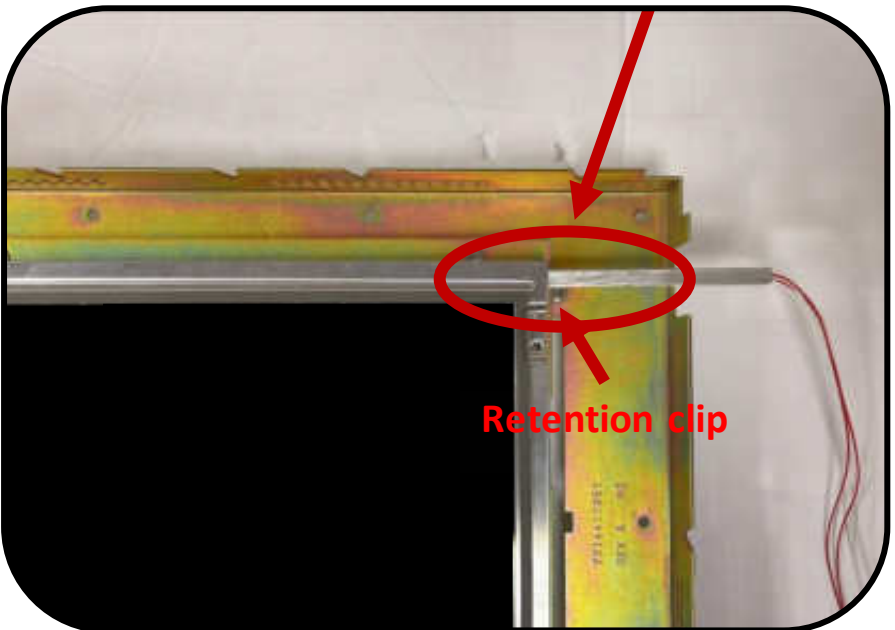
Step 4

Remove the 10 screws that hold the bottom chassis to the front bezel and put the bezel to the side



Step 5

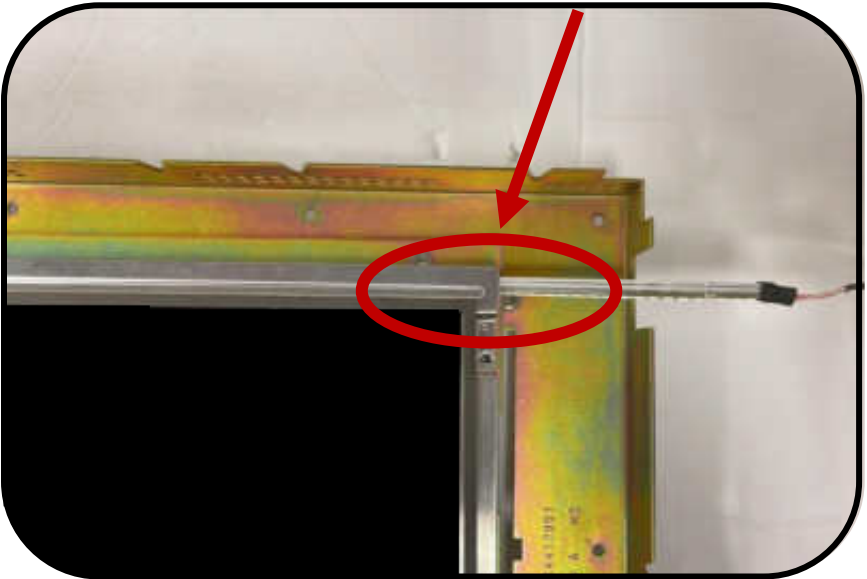
Flip over the unit, so that you can see the display. Depress the retention clip for the old incandescent backlight bulb and cable then, slide it out of the channel



Step 6

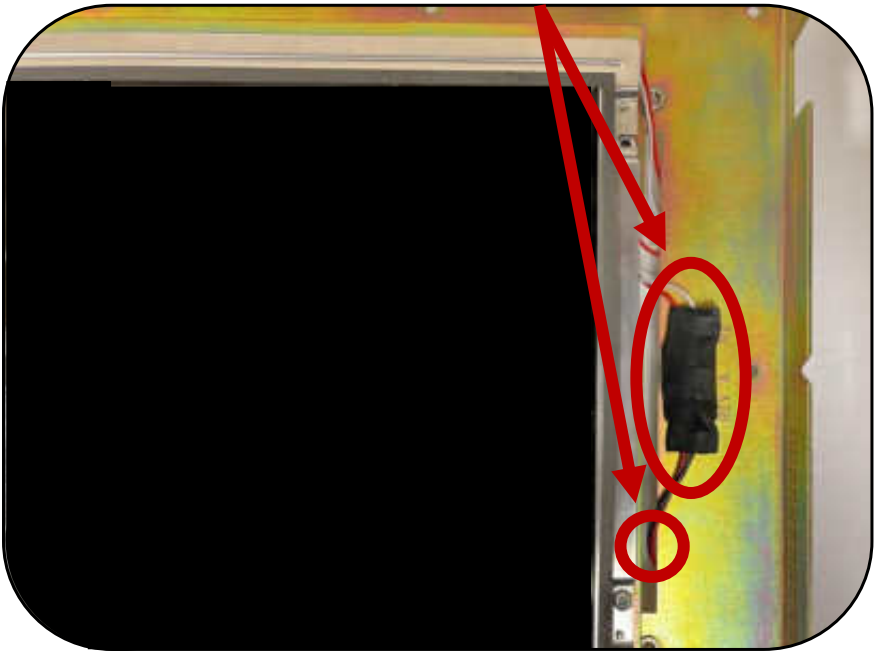
Carefully slide in new LED backlight into channel of LCD. Slide it all the way in until it stops

Route the LED backlights cable through slot in chassis



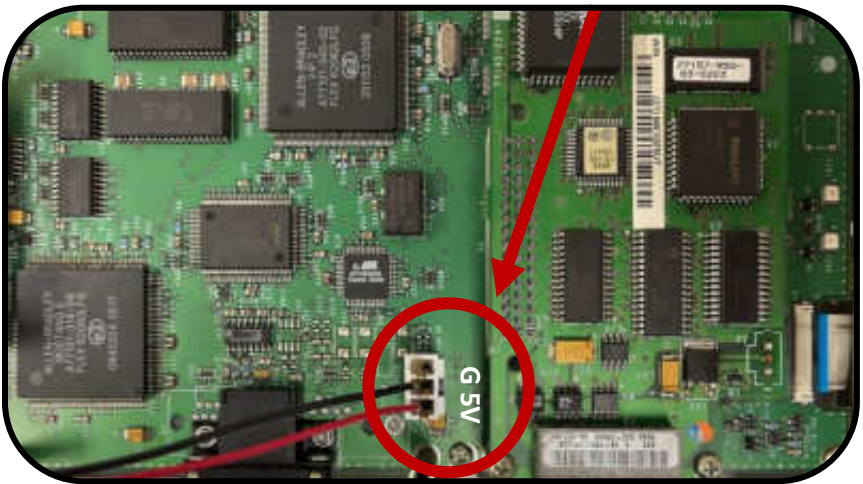
Step 7

Remove the red backing of the double-sided tape and stick done inverter.
Slide power cable through the slot between the LCD and metal work



Step 8

Locate the three pins that go through the power supply. Slide the connector over the pins locating the red (5V) to the edge of the bd.



Congratulations! You have finished the installation, to reassemble follow the appropriate steps in reverse order.