

LED Replacement Backlight for Panelview Plus 1000 2711P-

Fitment:

RL10C Series A



CAUTIONS:



Disconnect power from the terminal before installing or replacing any components. Take care not to touch any of the exposed electronic components during installation.



Work in a static free environment and wear a properly grounded electrostatic discharge (ESD) wristband. Be careful when touching any of the exposed electronic components to prevent damage from ESD.

KIT CONTENTS:

Part Number	Item	QTY
MPCB1000LEDS V2	Invertor Bd	1
LEDS1000 V2	LED Strips	1
MIC231	Power Cable	1

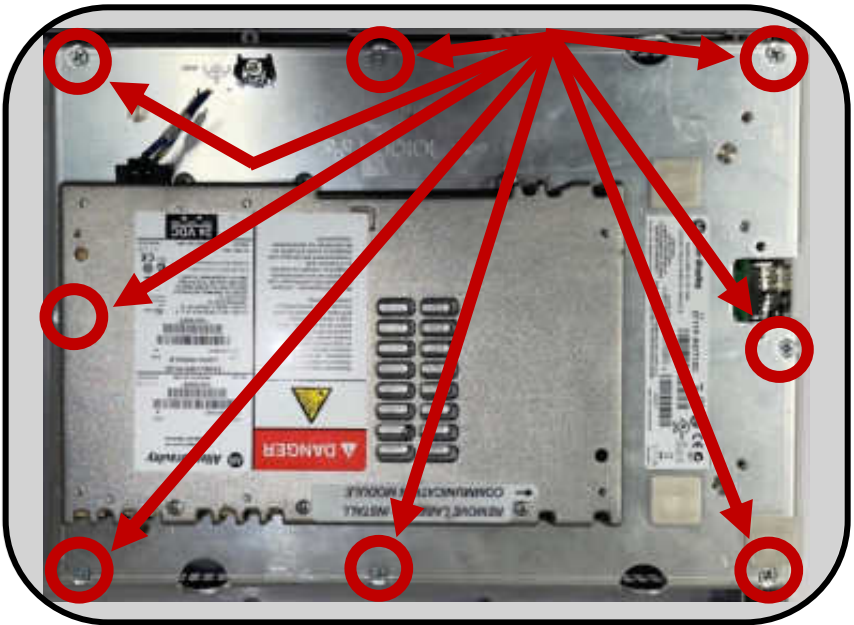
Step 1

Remove the 2 screws holding the access bracket on and remove it



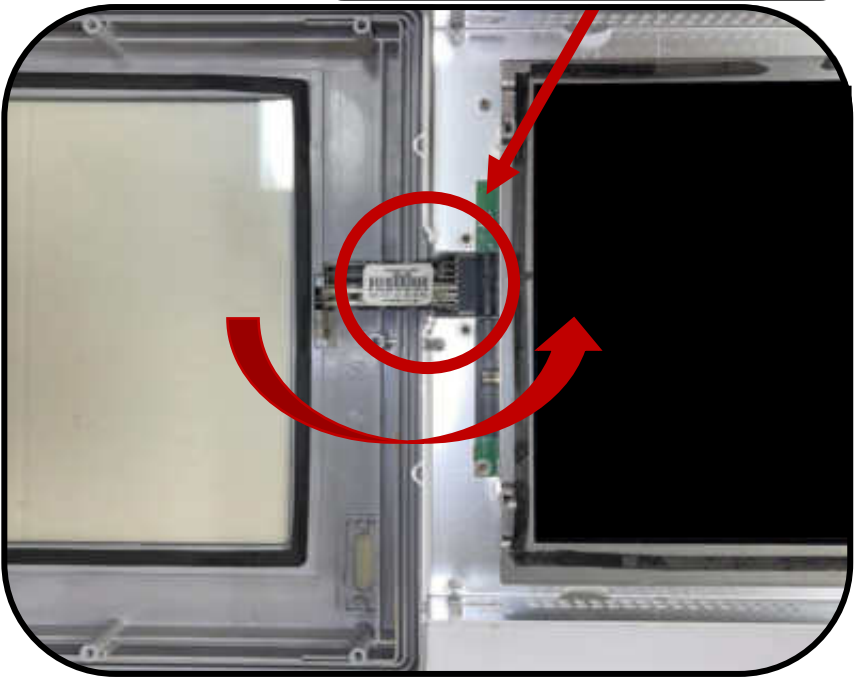
Step 2

Remove the 8 screws that are holding down the front bezel



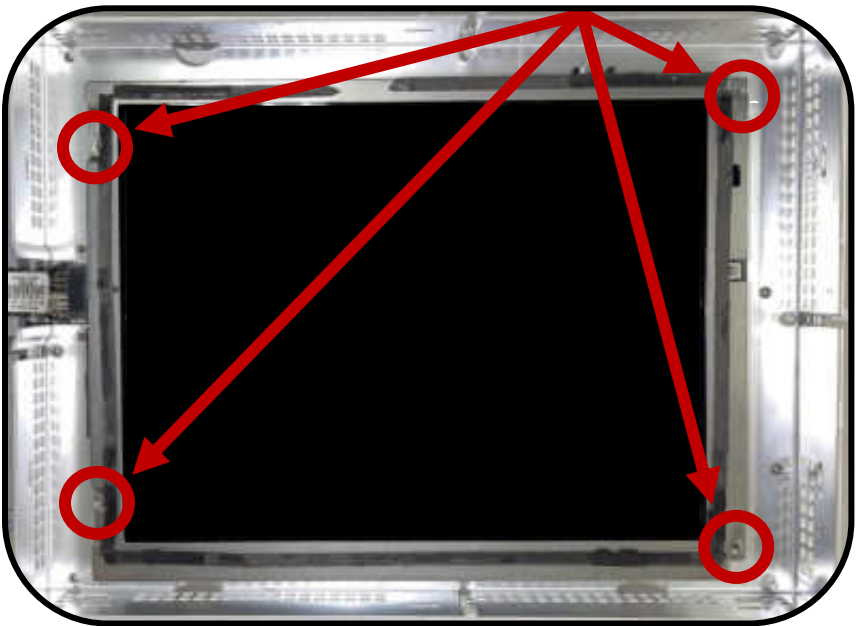
Step 3

Carefully open unit like a book. Make sure that the cables are in the slot



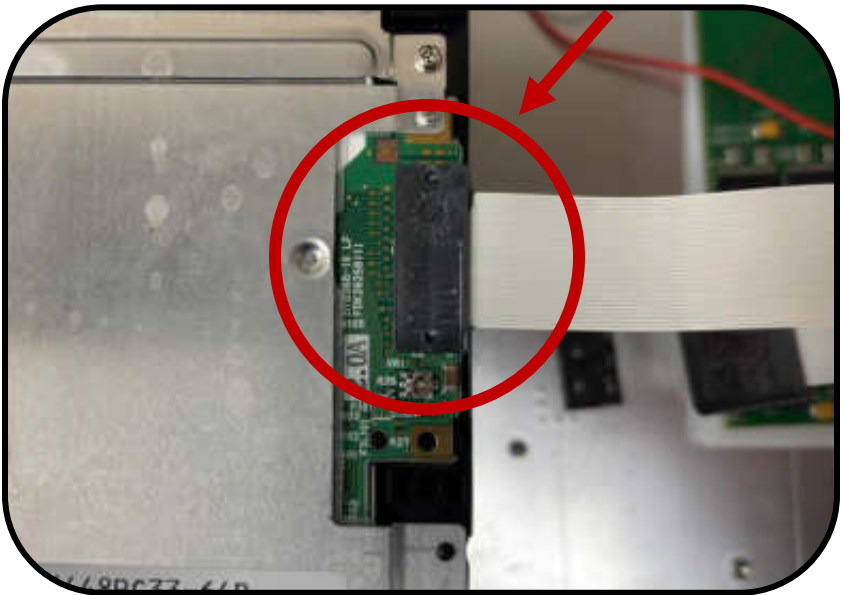
Step 4

Remove the 4 screws that
are holding down the LCD



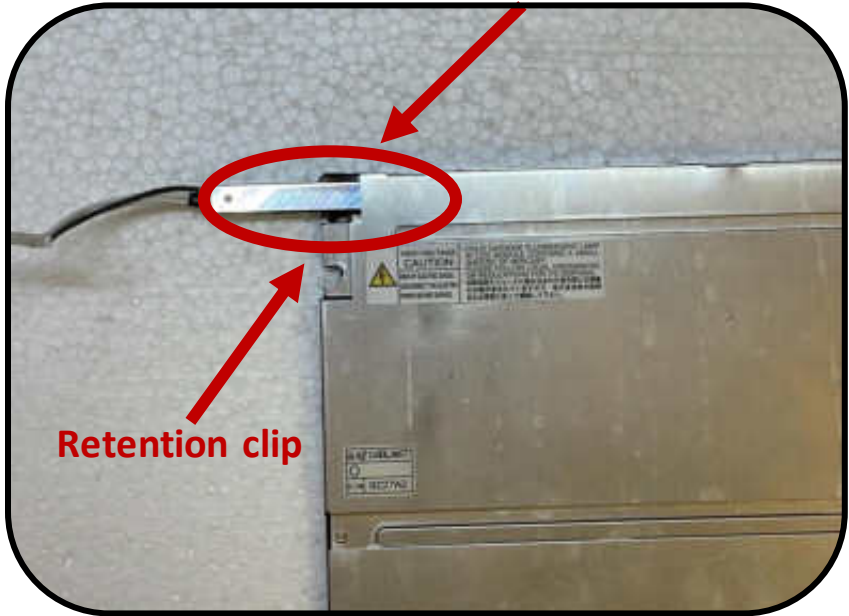
Step 5

Carefully lift and remove the
LCD cable



Step 6

Depress the retention clip for the old incandescent backlight bulb and cable then, slide it out of the channel

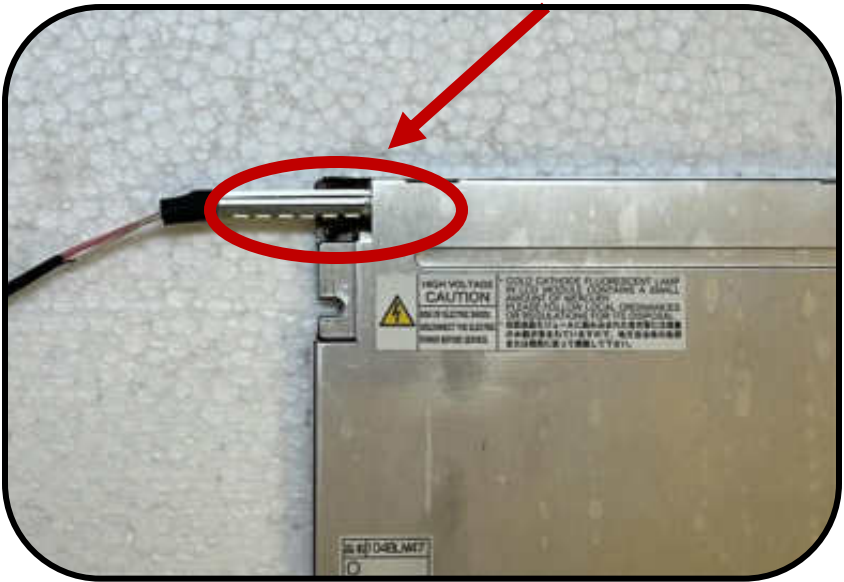


Retention clip

Step 7

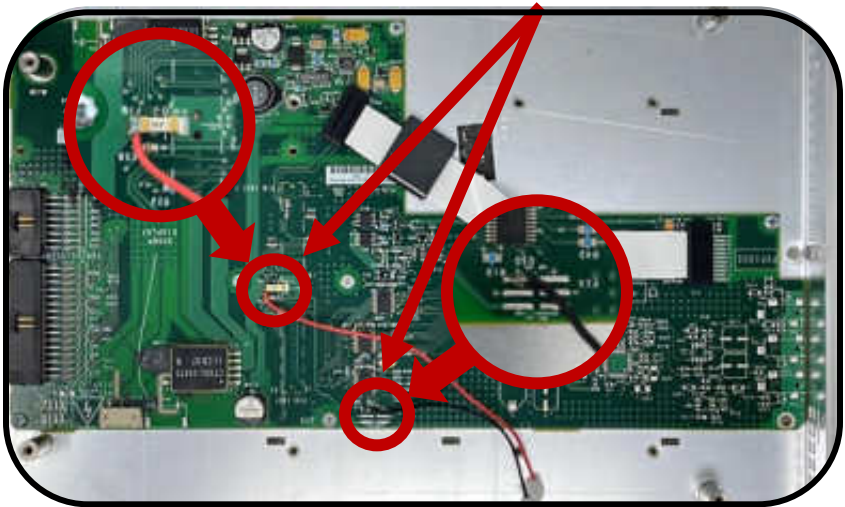
Carefully slide in new LED backlight into channel of LCD. Slide it all the way in until it stops

Set the LCD off to the side for now.



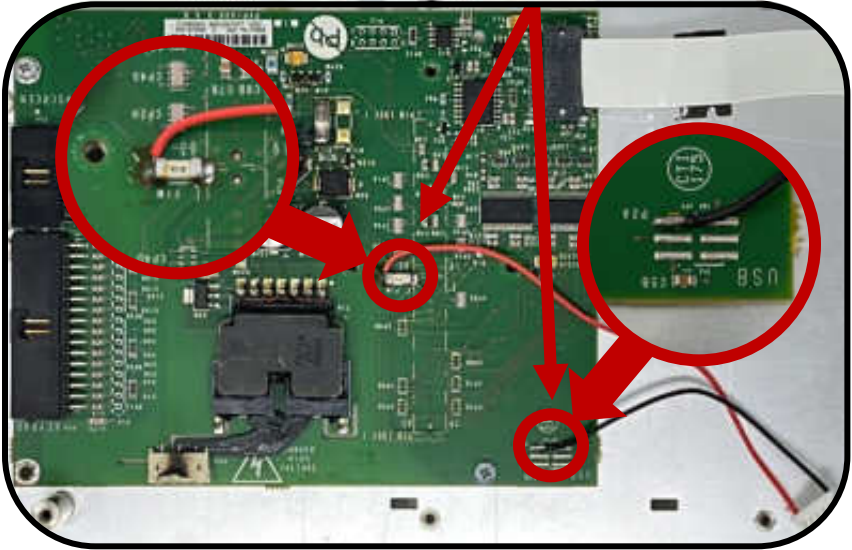
Step 8

If you have this control bd, then locate and solder the RD wire to F1M and the BK wire to P2A



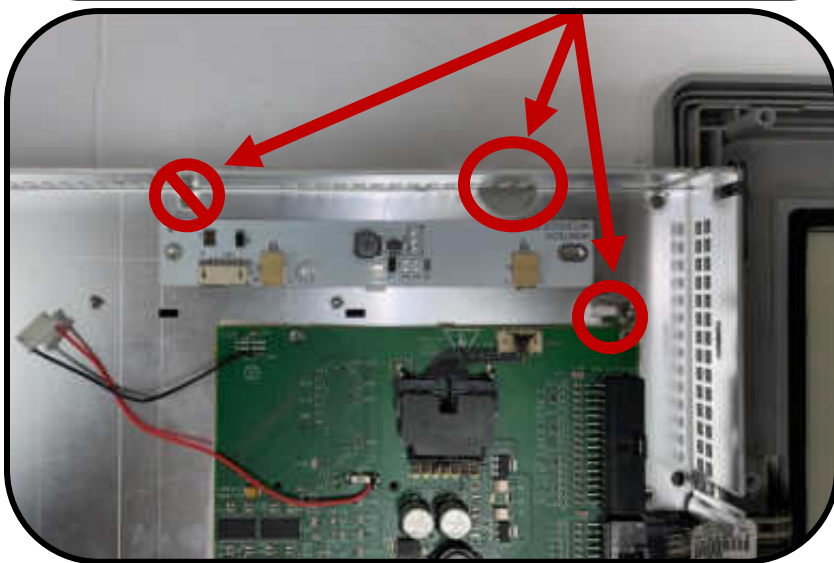
Step 9

If you have this control bd, then locate and solder the RD wire to F1M and the BK wire to P2A



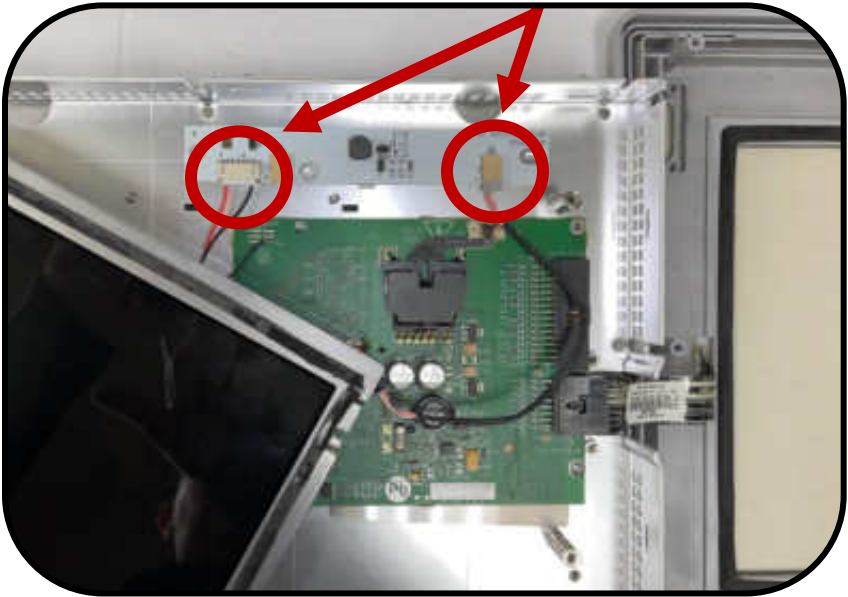
Step 10

Locate the semi-circle notch and standoff in the metal work. Remove backing from double sided tape and stick down the inverter bd. Make sure that it is not covering the screw hole for the front bezel



Step 11

Plug the power cable and the LED strip into the inverter



Congratulations! You have finished the installation, to reassemble follow the appropriate steps in reverse order.