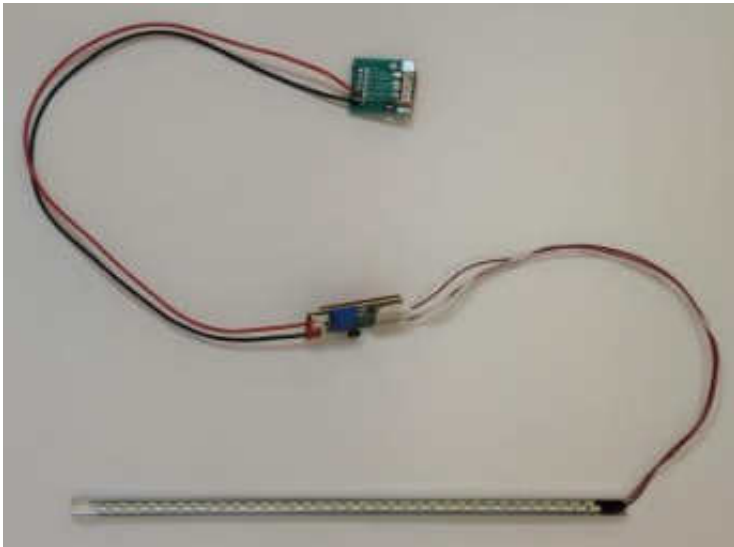


New LED Replacement back-light for MAZATROL 640 M (PC-FUSION-CNC) or LCD# NEC NL6448AC33- __ _ & NEC NL6448BC33- __ _



Step #1) Turn off power of machine & main power.

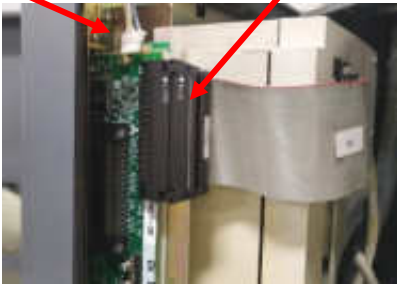
Step #2) Open up the front of the HMI with Allen Key.



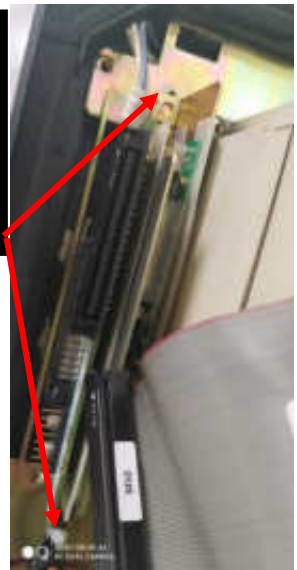
Step #3) Unplug Logic connector, Unplug CCFL Backlight connector. Take the Inverter out by Unscrewing the metal mount from HMI. Unplug the inverter cable from inverter.

CCFL CONNECTOR

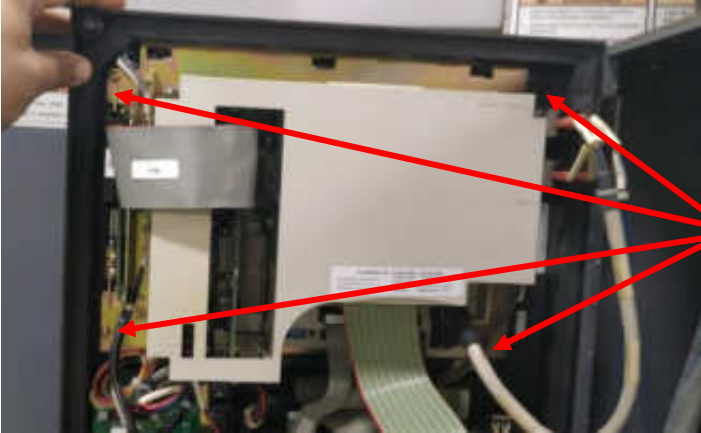
LOGIC CONNECTOR



UNSCREW
THESE
SCREWS

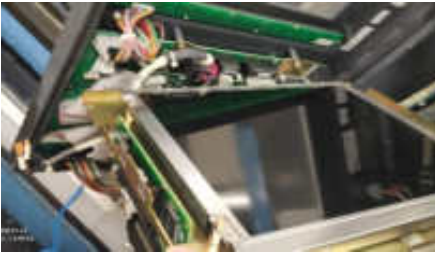


Step #4) Unscrew these screws to open the assembly to get to the LCD Panel.

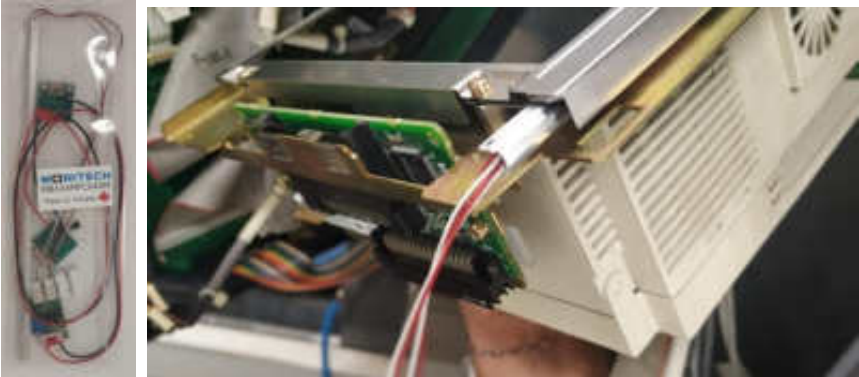


UNSCREW
THESE
SCREWS

Step #5) Take out the CCFL backlight out of the LCD Panel. There is a lock that holds the light in place. Use a flat head screwdriver to remove the lock.



Step #5) Get your Monitech LED Backlight replacement. Slide the backlight into the LCD panel.

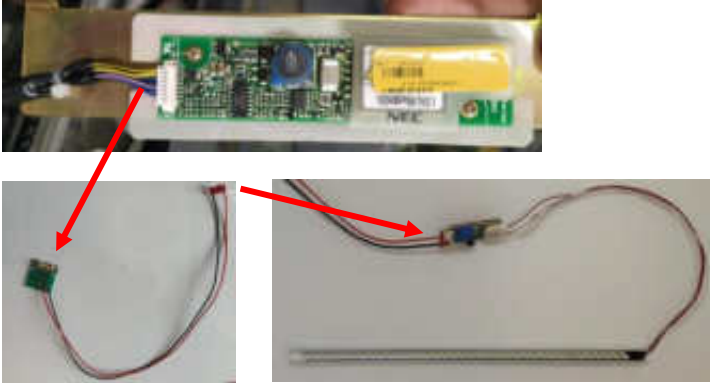


Step #6) Mount the HMI Assembly back on with screws removed in Step #4. Feed the of the backlight as shown.

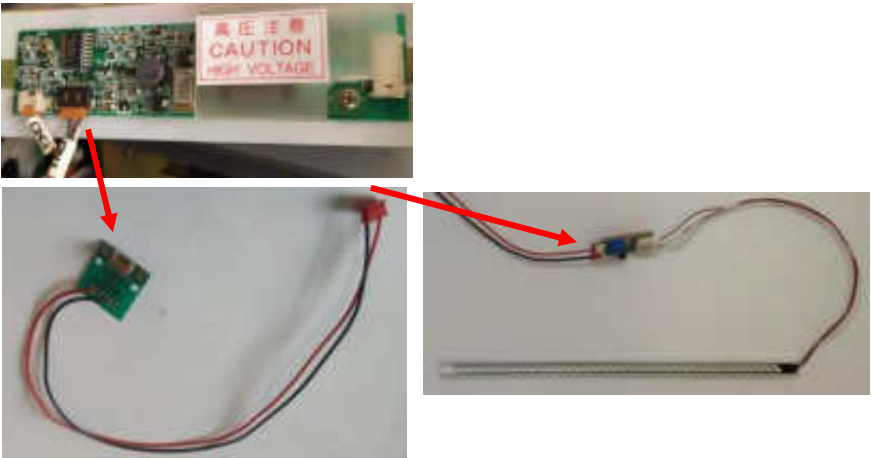


Step #8) This unit has different inverters to power the lights. Connect our power adaptors to the inverter cable and connect the other side of our adaptor to the Inverter board.

Inverter #1: NEC 104PW161, use the 10-pin power adaptor cable then connect it to our inverter cable.



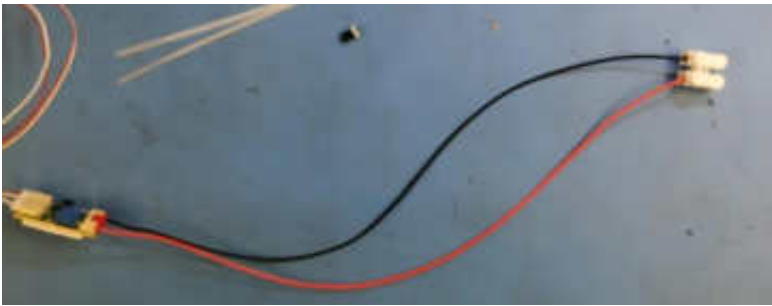
Inverter #2: NEC 104PWBR1, use the 5-pin power adaptor cable then connect it to our inverter cable.



For Other Inverters: Search the pin out online and find out the 12 VDC and the Ground go into the inverter.

Cut the Red & black wire off the board of the power adaptors we sent. Strip the wires.

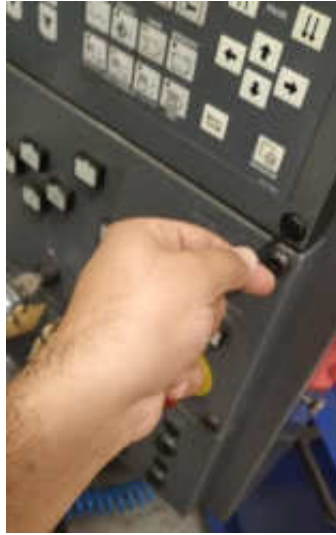
Use the dual wire connector to connect the 12 VDC of your inverter to the Red wire of either power adaptor. Use the dual wire connector to connect the Ground of your inverter to the black wire of either power adaptor.



DUAL WIRE CONNECTOR



Step #9) Use the accessories in the bag we sent you to mount and zip tie excess wires. Use the double-sided tape to mount the board in place or use the nylon hardware to mount the board in a position that is comfortable with you. Close the HMI Door and screw the fastener to lock the door.



Step #10) Power on your machine and main power. Now you can see!!!



For Technical Support, Call
1-877-493-6105
Support@Monitech.com



20 Howard Place
Kitchener, Ontario N2K 4Z4
CANADA 519.725.222
www.monitech.com