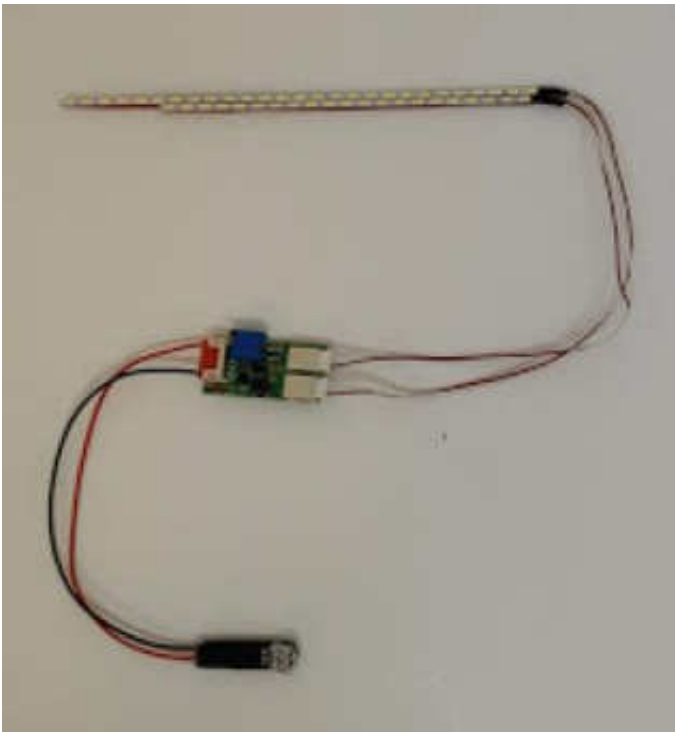
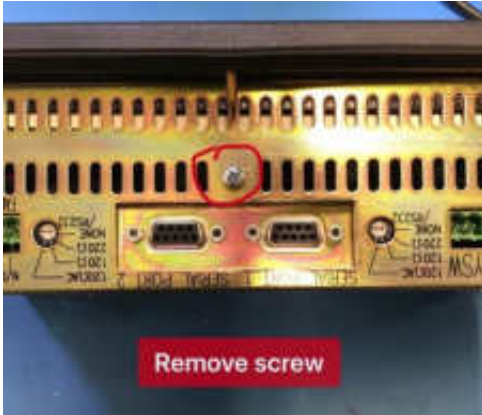


LED Backlight for CUTLER-HAMMER 1785T, 9M99, 1700



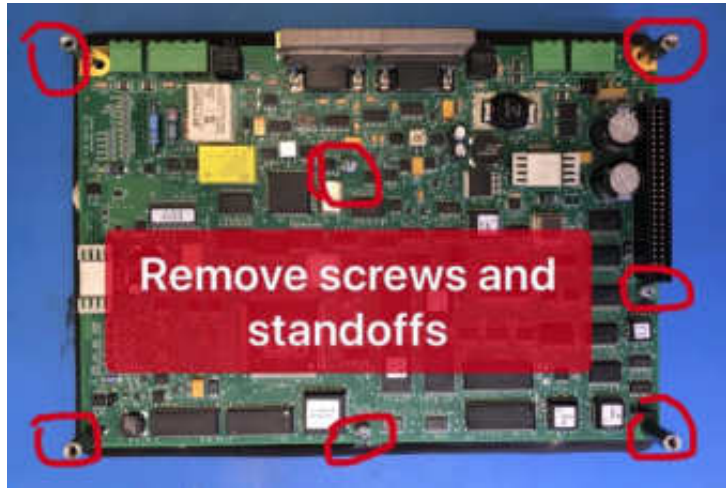
Step 1

Remove cover.



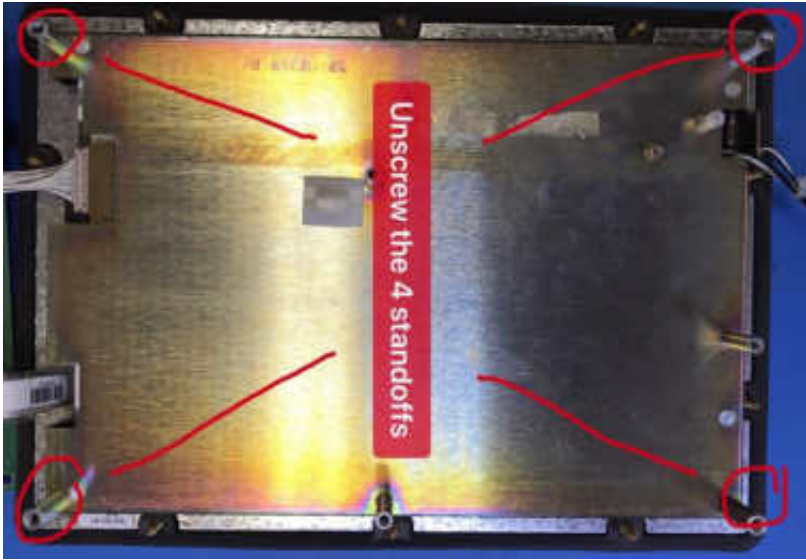
Step 2

Remove circuit board



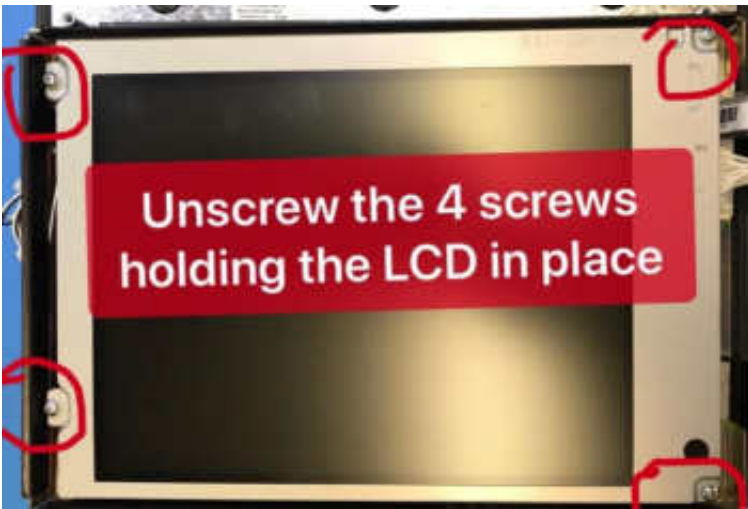
Step 3

Remove LCD panel assembly.



Step 4

Remove the LCD panel.



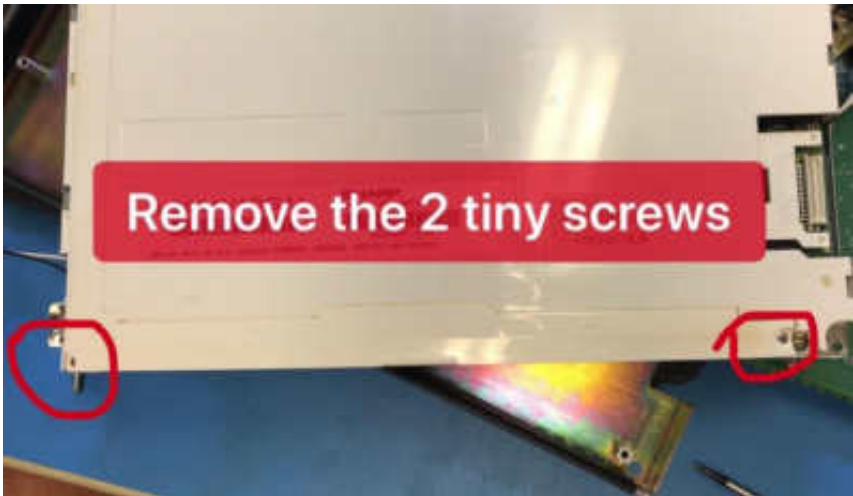
Step 5

Unplug the LCD panel cable.



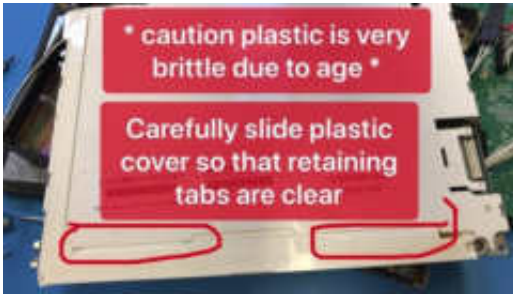
Step 6

Remove the screws holding the backlight housing.



Step 7

Remove the backlight housing



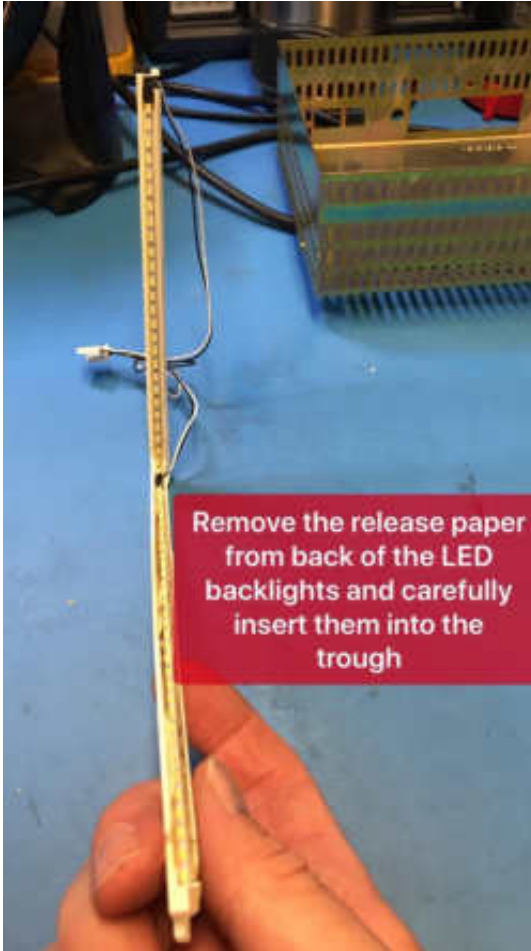
Step 8

Remove old backlights and prepare housing for new LED bulbs.



Step 9

Remove release paper and carefully stick LED backlights into the trough.



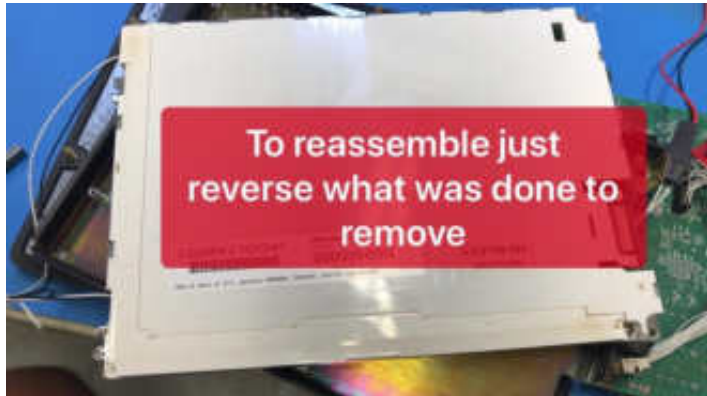
Step 10

Route the wires to the notches on the backlight housing.



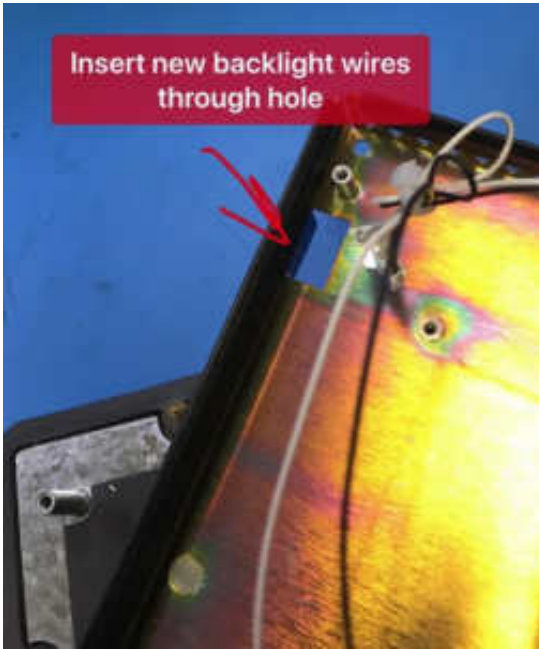
Step 11

Carefully slide housing back into the LCD panel, being careful not to brake the plastic, and reinstall the 2 screws.



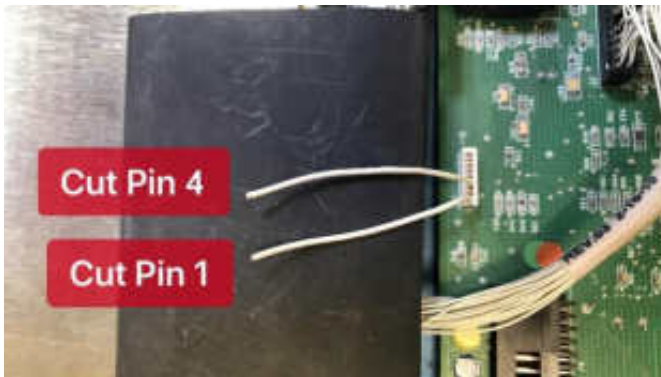
Step 12

Reinstall the LCD panel as in **Step 4**. Route the LED backlight wires through this hole.



Step 13

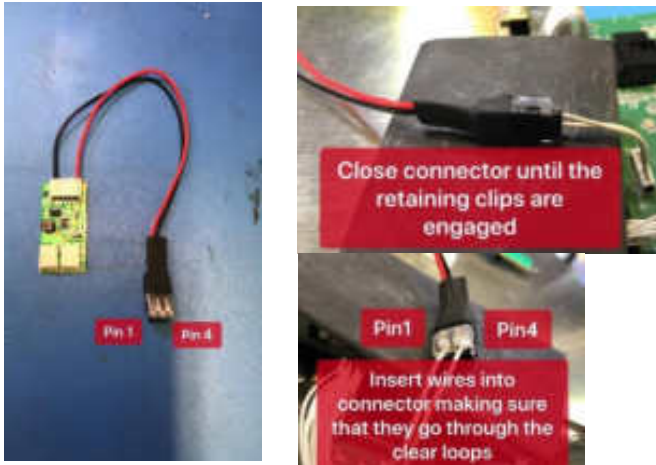
Identify pins 1 and 4 on the control board and cut them to about 5 cm in length. Remove or cut the rest of the wires as they are no longer needed.



Step 14

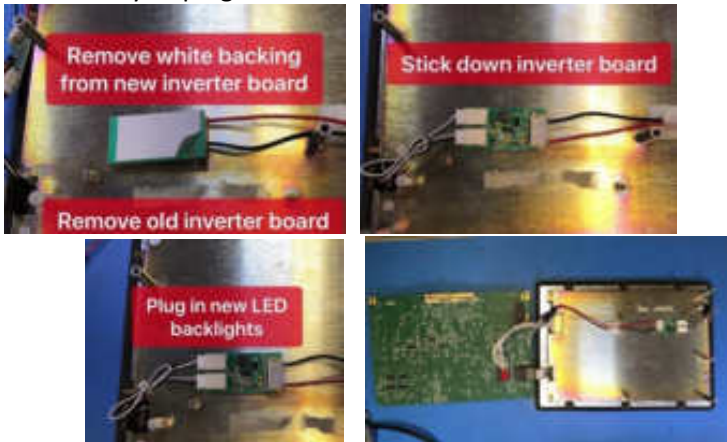
Identify pins 1 and 4

on the LCD backlight inverter, then insert the wires from previous step into the connector. Push closed the connector until the side clips are engaged.



Step 15

Located area on the back of LCD mounting plate and remove the release paper from the back of the inverter board. Stick inverter board down. Plug the LED backlights into the inverter board. It doesn't matter which connector you plug into.



You have now completed installing the LED backlights and now proceed to putting it all back together. To do this follow **Steps 1-3** in reverse order.



Enjoy your rejuvenated HMI. Call us to order more HMI replacement parts.

Keep your PANELMATE HMI's up and running!

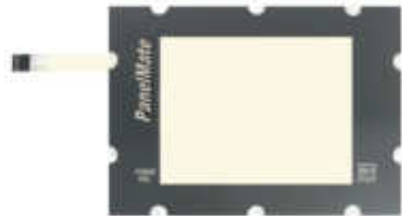


ML1211LLMATE -12.1" LCD Upgrade for (Panelmate/Cutler) with 14" CRT. Just take a picture of your video connector

ML080MATE -8" LCD Upgrade for (Panelmate/Cutler) with 9" CRT. Just take a picture of your video connector



MPC21P -LCD Panel kit for the PanelMate 1775K



MF1775T- Touchscreen and overlay and Plexiglas for Panelmate 1775T. 8.0" Touchscreen.

For Technical Support, Call
1-877-493-6105
Support@Monitech.com



20 Howard Place
Kitchener, Ontario N2K 4Z4
CANADA 519.725.2222
www.monitech.com