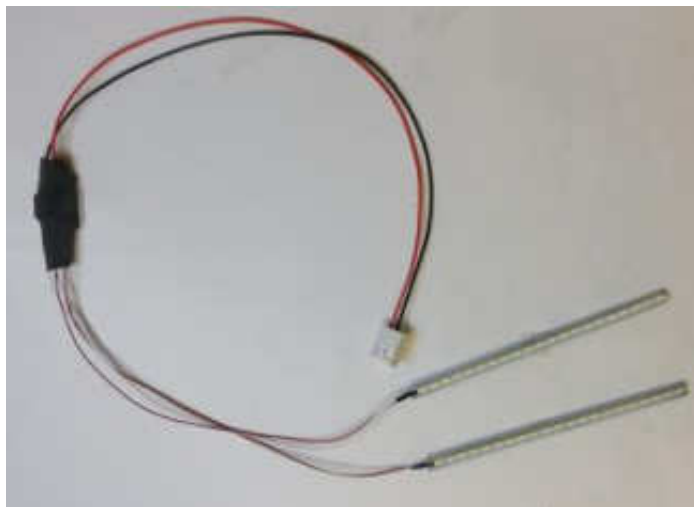


Replacement LED backlights for your PanelView 600 2711-K6C10, SER#C, REV#A



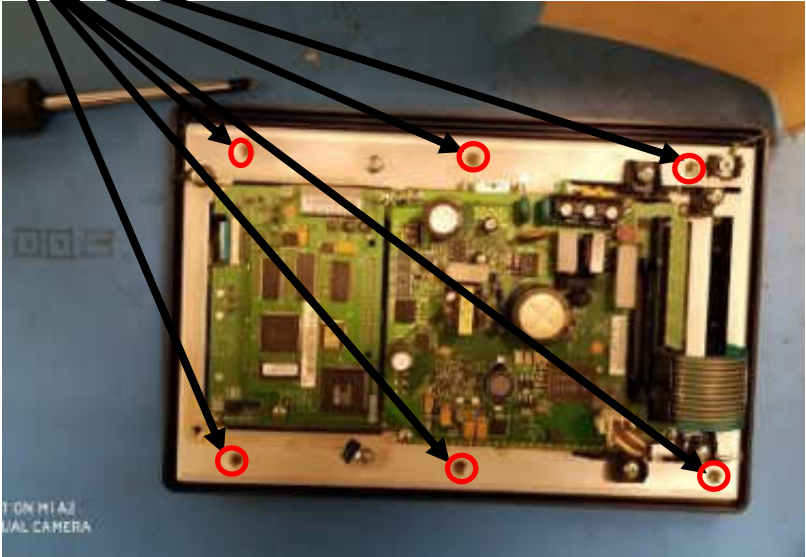
Original HMI of Allen-Bradley PanelView 600 2711-K6C10,
SER#C, REV#A



Remove back cover (8 screws)



Unscrew these 6 screws.



UNPLUG THE TOUCH SCREEN CABLE



Open the back and unplug the original CCFL bulbs from connector.



With a flat head screwdriver push down on tabs holding the lights in place. Then pull them out carefully. You might have to unscrew the LCD off its mounting to get the light fully out.

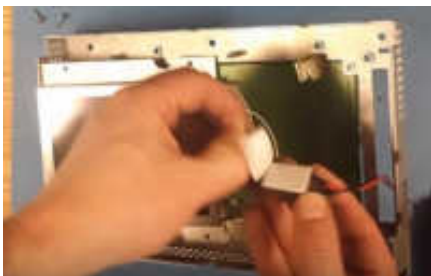


Take out

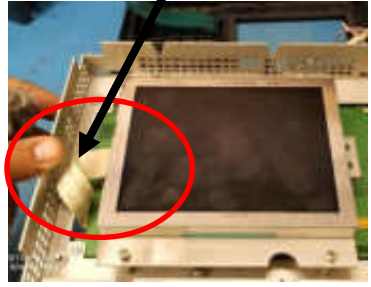
With a flat head screwdriver push down on tabs holding the lights in place. Now put in your Monitech LED backlights into the LCD panel.



Take the double-sided tape cover off the inverter and stick it as show, the other wires for the power connector goes through the hole on the side of the Panel View terminal.



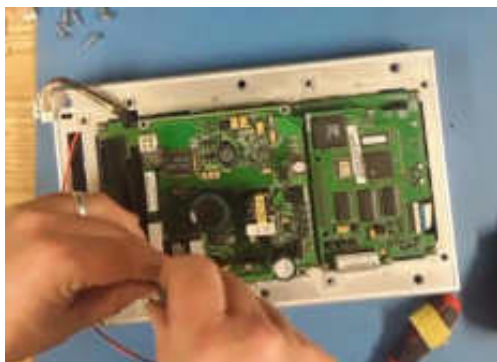
Mount the LCD back in place and make sure the ribbon cable of the LCD is still seated.



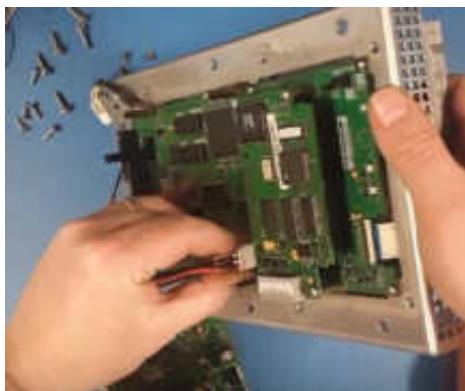
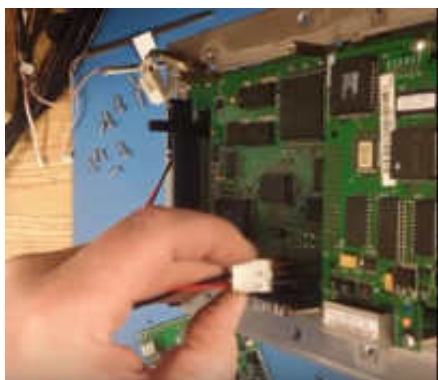
Take out the Old CCFL backlight assembly. Unplug the 4 pin white connector and take it out.



Unscrew the power supply board, take off the board to get to the 3 pins.



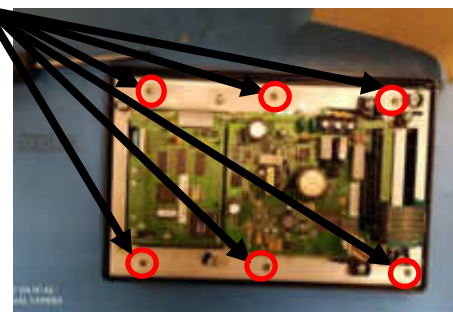
Plug in the backlight plug and plug it in as shown into the gold pins.



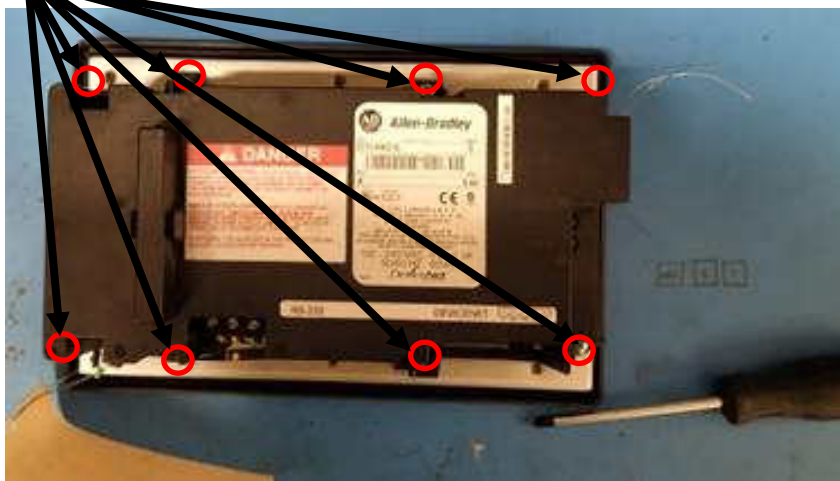
Place the power supply board back on and make sure the gold pin go through. Screw the board in place.



Screw these 6 screws and Connect the touch screen cable.



Screw in back cover (8 screws)



Test the light by adding a power plug to the terminal of the controller and plug it in.



NOW YOU CAN SEE !!!

Enjoy your rejuvenated Monitor.
Call us to order more HMI replacement parts.

Keep your AB PanelView's up and running!



Replacement: LCD's, Backlight's, Keypad's
& Touchscreen's for the whole 550 line.



Replacement: LCD's, Backlight's, Keypad's
& Touchscreen's for the whole 600 line.



Replacement: LCD's, Backlight's, Keypad's
& Touchscreen's for the whole 900 line.



Replacement: LCD's, Backlight's, Keypad's
& Touchscreen's for the whole 1000 line.



Replacement: CRT TO LCD
CONVERSION's, Backlight's, Keypad's &
Touchscreen's for the whole 1200 line.



Replacement: CRT TO LCD
CONVERSION's, Backlight's, Keypad's &
Touchscreen's for the whole 1400 line.

For Technical Support, Call
1-877-493-6105
Support@Monitech.com

