

LCD upgrade kit

FOR YOUR IKEGAMI PM-509



MONITECH
PRACTICAL SOLUTIONS FOR INDUSTRIAL DISPLAYS



IMPORTANT:

WARRANTY

Before using any MONITECH product please carefully review this Manual as well as any additional documentation provided with your shipment.

Attempting any of the following will void product warranty:

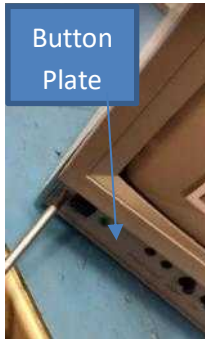
- unauthorized repairs or parts replacement
- inappropriate use or placement: exposing product to liquids, harmful gases, electrical shock, physical shock, temperatures beyond the range of -4°F to 140°F (-20°C to 60°C)
- use of electrical voltage other than 12V 4.16A (power supply and AC cable provided)
- Removal or modification of serial, product, or warranty labels.

	WARNING	
	ELECTRICAL HAZARD DO NOT OPEN	
TO AVOID ELECTRICAL SHOCK DO NOT OPEN PRODUCT CASING. UNAUTHORIZED REPAIRS OR PARTS REPLACEMENT ARE PROHIBITED AND WILL VOID PRODUCT WARRANTY. PLEASE RETURN TO MONITECH FOR REPAIRS.		

REMOVAL:

Step #1) Turn off turn off power, Unplug the power cord.

Step #2) Remove the Cover, Button Plate & Bezel by unfastening the screws.



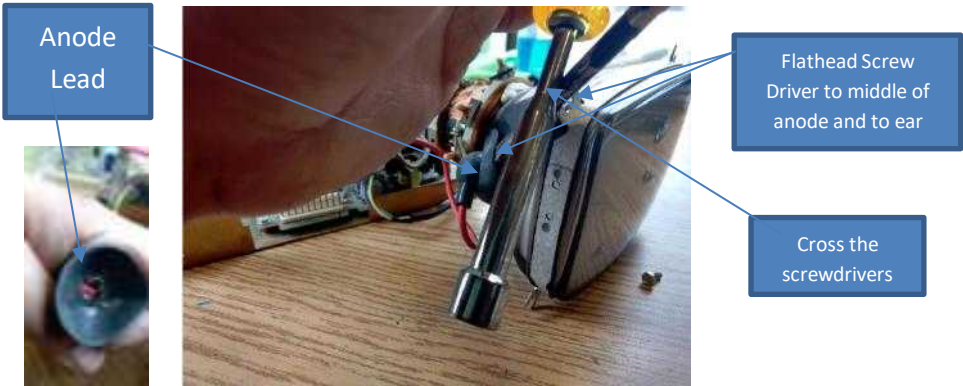
Step #3) Remove the CRT out of the chassis by unfastening the 4 mounting nuts that hold the CRT in place. Keep the nuts because you are going to need them to put your Monitech LCD Upgrade back into your machine.



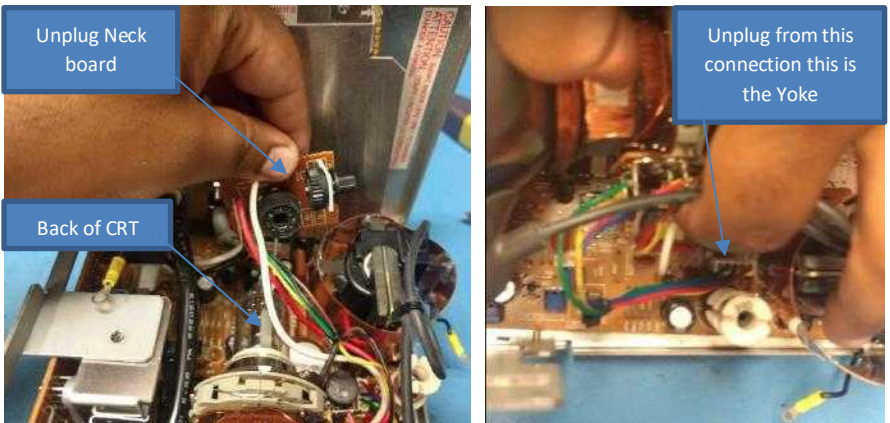
Nuts that are to be unfastened, to remove the CRT from the chassis

CRT

Step #4) Remove CRT out of chassis by, first grounding out CRT by placing a flathead screwdriver underneath the anode lead, and make sure the screwdriver is touching the metal in the middle of the anode lead and the other end is touching the ear of the CRT and have another screw driver cross with your flat head screw driver. This is for safe removal. Remove anode lead by pressing one side of the screwdriver to the metal in the middle of the anode lead & take it out from the same side you were pressing.



Step #4) Remove the Neck Board from the CRT it is located at the back of the monitor. Remove the Yoke from the Board in the chassis. Remove any other connectors to the boards on the chassis such as Degus Cable and unscrew 4 screws holding ears of CRT to chassis, so that that the CRT can be remove fully out of the chassis. Remove all other remaining circuitry in the chassis. Remove screws that hold the boards in place and take out boards and then the other cables.

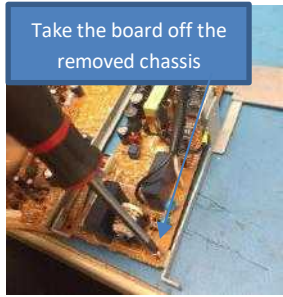




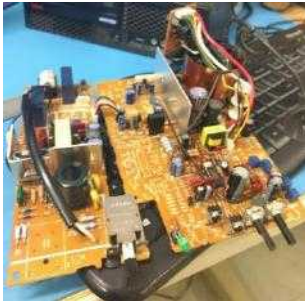
Take the board out, by removing one side of the chassis



Take the back off the chassis



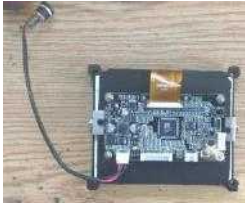
Take the board off the removed chassis



Reattach the previously removed chassis to the full chassis

ASSEMBLE:

Step #5) Now you have an open chassis. Place Monitech's LCD Upgrade on to the chassis by using the same holes that held your CRT. Use the nuts previously removed to hold the LCD in place. Screw in the User Controls.



Place the LCD Bezel this this use the nuts if possible



Step #6) Remove the board off the back cover by snipping the metal wires. Remove the IN BNC and replace it with our BNC (MAV051). Cut the wire attaching the power to the boards. Crimp and fasten MAP204 to power wires.

Cut over here with snips

Unscrew In BNC and replace it with our BNC (MAV051)



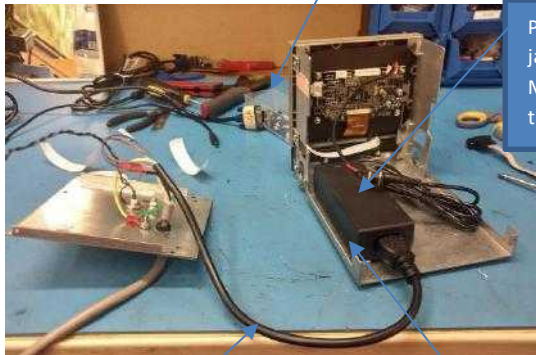
Strip your black and white wires. With butt connector connect the white wire to red wire of MAP304. With the black wire attach it to the blue wire of the MAP304. Attach grounds together.

Step #7) Connect your MAP304 into MAP307. Put the Jack of MAP307 into Monitor. Then connect your BNC to the Board. Connect the User Controls to the board. Follow Picture.

Connect User Controls into board with ribbon wire.

Connect the BNC to the Board

Plug in the jack from MAP307 into the monitor



MAP304

MAP307

INSTALLATION:

Step #8) Plug in the power cord. Plug BNC to a DVD player using our test cable. Press power button on user controls. Check if monitor is working. If you want to double check, turn power off then unplug BNC connector and plug MAV050 into board shown in picture below. Connect MAV003 to your computer and connect the other side to MAV050.

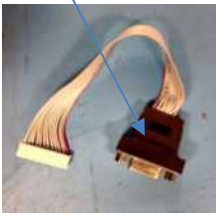
Plug the MALE BNC of test connector into the IN BNC on the monitor



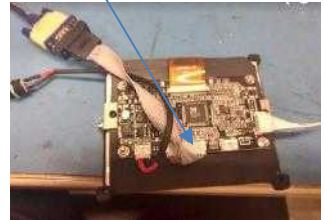
Plug this side into your DVD Player

Unplug BNC connector and then plug MAV050 into here.

MAV050



MAV003



Step #9) Readjust screen, size, brightness etc. Use the user controls and user guide. Make BNC is used for this step.

Step #10) Place the front Bezel onto the frame and fasten screws. Use the double sided tape provided the keep MAP307 in place. Use zip ties to have the wires into organized fashion. Fasten the back cover & top cover back onto the controller. You're ready to go.



Enjoy your rejuvenated Monitor.
Call us to order more replacement parts.

Keep your Panelview 550 up and running!



LED backlight MB550E



Fiber optic MB550FOS



Fiber optic MB550FOL



Touchscreen MF550T



Keypad MF550K



Keypad-touchscreen
MF550B

For Technical Support, Call
1-877-493-6105
Support@Monitech.com

MONITECH

20 Howard Place
Kitchener, Ontario N2K 4Z4
CANADA 519.725.222