

# ML084QTMX2S & ML084QNMX2 INSTALL GUIDE

---

## LCD upgrade kit

For 9" Prototrak MX2, MX3, AGE2, AGE3, LX2 &  
LX3 CRT



FOR MX2, MX3, AGE2,  
AGE3, LX2 & LX3.

CONTROLLER #: 15814R  
REV F

FOR MX2, MX3, AGE2,  
AGE3, LX2 & LX3.

CONTROLLER #:  
16274R REV C & 20180  
REV E & 21262 REV B

**MONITECH**  
PRACTICAL SOLUTIONS FOR INDUSTRIAL DISPLAYS

---



# IMPORTANT:

## WARRANTY

Before using any MONITECH product please carefully review this Manual as well as any additional documentation provided with your shipment.

### Attempting any of the following will void product warranty:

- unauthorized repairs or parts replacement
- inappropriate use or placement: exposing product to liquids, harmful gases, electrical shock, physical shock, temperatures beyond the range of -4°F to 140°F (-20°C to 60°C)
- use of electrical voltage other than 12V 4.16A (power supply and AC cable provided)
- Removal or modification of serial, product, or warranty labels.

	<b>WARNING</b>	
	<b>ELECTRICAL HAZARD DO NOT OPEN</b>	
TO AVOID ELECTRICAL SHOCK DO NOT OPEN PRODUCT CASING. UNAUTHORIZED REPAIRS OR PARTS REPLACEMENT ARE PROHIBITED AND WILL VOID PRODUCT WARRANTY. PLEASE RETURN TO MONITECH FOR REPAIRS.		

# REMOVAL:

**Step #1)** Turn off turn off main power, turn off machine power.

**Step #2)** Unplug the Logic Cable, Power Cable and Ground from the console. Unplug any other cables from the back of the console.



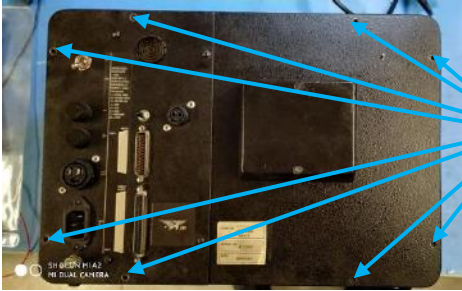
Unplug the Logic Cable, Power Cable and Ground from the console. Unplug any other cables from the back of the console.

**Step #3)** Unscrew the 4 screws holding the console on side of the Milling Machine. Take the cabinet onto a bench.



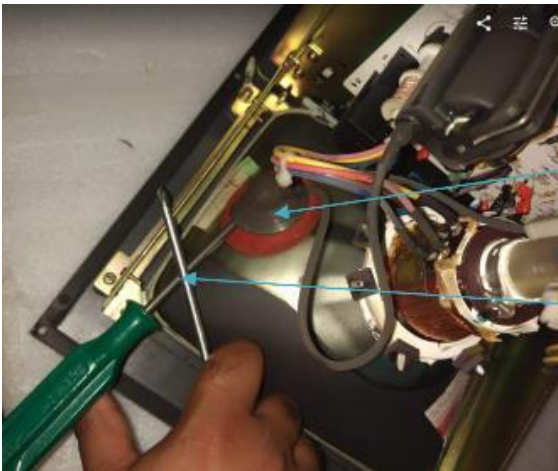
Unscrew the screws that is mounting the console.

**Step #4)** Unscrew the 8 Screws holding the back cover of the console, to open it up to get to the CRT.



Unscrew the screws that is mounting the back cover of the console.

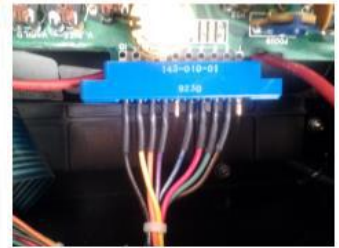
**Step #5)** Discharge the CRT, it has high voltage. Be careful. Put a flat head screw driver underneath the anode lead cap so it is touching the metal part. And get another screwdriver and cross it with the flat head used and touch the metal frame with it. After a minute take the Anode lead Cap off, or unplug it from the driver board of the CRT.



Anode Lead

This method grounds out all high voltage from the CRT

**Step #6)** Open up the back cover carefully. Unplug the Blue Connector from the CRT board. Unscrew the 4 Nuts holding the CRT in place. Remove the CRT out of the console.

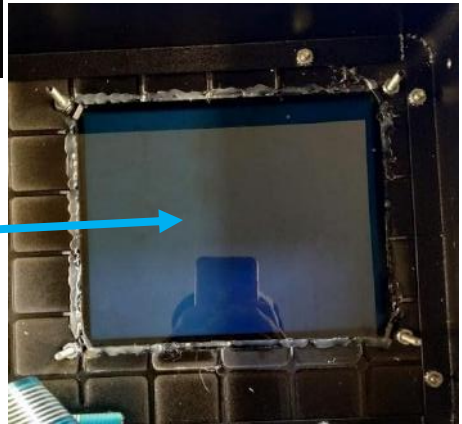


Unplug this blue connector



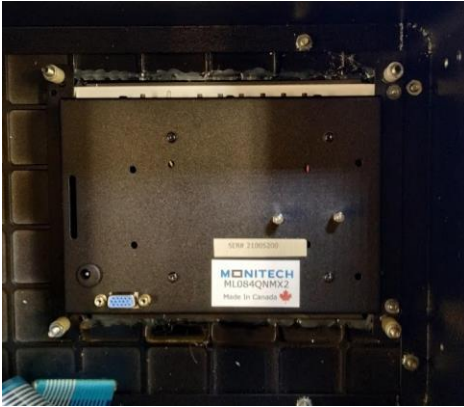
Unscrew the nuts holding the CRT in place.

This is what is left after taking the CRT out of the console.



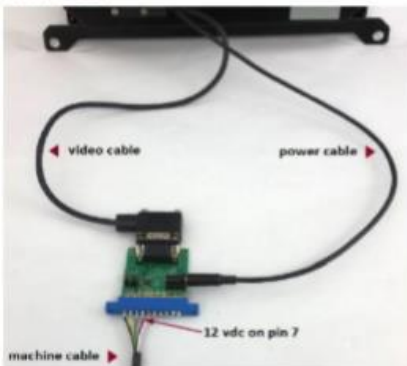
# INSTALLATION:

**Step #7)** Now place your Monitech Monitor into the console, by using the 4 screw studs to mount it.



**Step #8)** Then take out the MK041, take out the MAB409 out of the bag. Set it up as shown if you have a wire on Pin 7 of your blue connector then use typical set-up. If you do not have a wire on Pin 7 on the blue connector use alternative set-up. Mount the MPCB003 Board to the monitor or mount it where the bottom of the board does not touch any metal.

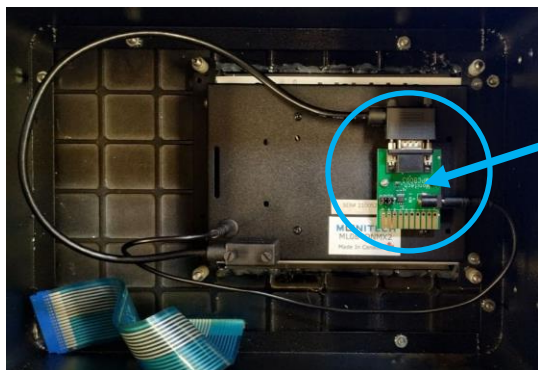
**TYPICAL SETUP**



**ALTERNATE SETUP**







MAKE SURE TO MOUNT THE MPCB003 BOARD SOMEWHERE THAT THE BOTTOM OF THE BOARD IS NOT TOUCHING METAL.

**Step #9)** Before assembling everything back together on your machine. Do a bench test by just providing power to the console. You should get an image of green lines running across your screen.



**Step #10)** Take the console, still have the back cover unscrewed. Plug all the connectors in that were unplugged in Step # 2.



Plug the Logic Cable, Power Cable and Ground from the console. Plug any other cables from the back of the console.

**Step #11)** Power on the machine and main power. You should get an image. Use the User Controls found on the back of the monitor to adjust your screen so that it is centred, and all the contents of the image are shown in the display. Use the User Guide Document to show you how to use the menu.

10" & 12" LCD USER MANUAL N SERIES

One touch does it!

FOR ML084QNMX2



**MONITECH**  
PRACTICAL SOLUTIONS FOR INDUSTRIAL DISPLAYS

REV. A AUGUST 2017

8-INCH LCD USER MANUAL TS SERIES

Set up your 8-inch LCD



**MONITECH**  
PRACTICAL SOLUTIONS FOR INDUSTRIAL DISPLAYS

REV. A AUGUST 2017

FOR ML084QTMX2S





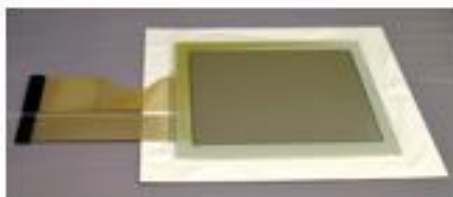
**Step #12)** Shut off the main power and machine power. Then screw in the back cover. Screw the console back onto the side of the machine with 4 screws. Make sure all the plug is plugged in. Then power your main power and machine power. The screen should display the perfect image of your Prototrax MX2.



# YOU DONE & NOW YOU CAN SEE!!!

# DISPLAY PARTS

Your source for reliable after-market solutions



Enjoy your rejuvenated Monitor.  
Call us to order more replacement  
parts.

For Technical Support, Call  
**1-877-493-6105**  
[Support@Monitech.com](mailto:Support@Monitech.com)



20 Howard Place  
Kitchener, Ontario N2K 4Z4  
CANADA 519.725.222