

LCD upgrade kit

FOR YOUR TRUMPF V230




IMPORTANT:

WARRANTY

Before using any MONITECH product please carefully review this Manual as well as any additional documentation provided with your shipment.

Attempting any of the following will void product warranty:

- unauthorized repairs or parts replacement
- inappropriate use or placement: exposing product to liquids, harmful gases, electrical shock, physical shock, temperatures beyond the range of -4°F to 140°F (-20°C to 60°C)
- use of electrical voltage other than 12V 4.16A (power supply and AC cable provided)
- Removal or modification of serial, product, or warranty labels.

| | | |
|---|--|--|
|  | WARNING |  |
| | ELECTRICAL HAZARD DO NOT OPEN | |
| TO AVOID ELECTRICAL SHOCK DO NOT OPEN PRODUCT CASING. UNAUTHORIZED REPAIRS OR PARTS REPLACEMENT ARE PROHIBITED AND WILL VOID PRODUCT WARRANTY. PLEASE RETURN TO MONITECH FOR REPAIRS. | | |

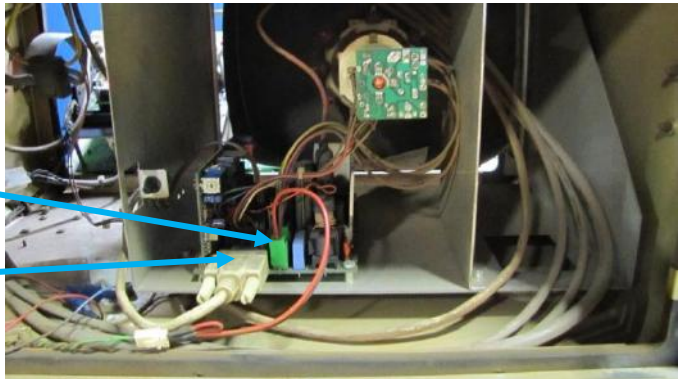
REMOVAL:

Step #1) Turn off main power & turn off power for machine.

Step #2) Unscrew the screws around the boarder of the HMI, unplug video cable and detach power.

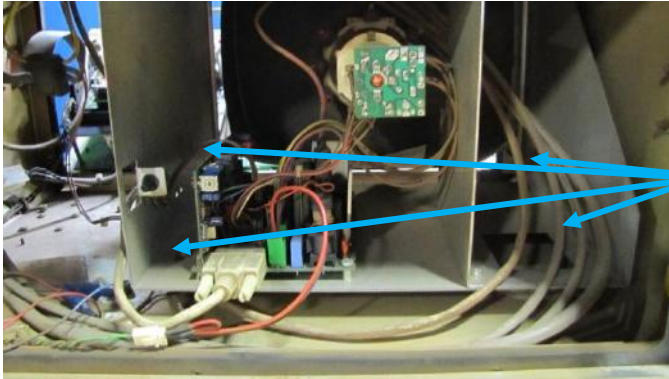


Take the Front Cover of the HMI by unscrewing each of the following screws. Keep the screws for re- installation.



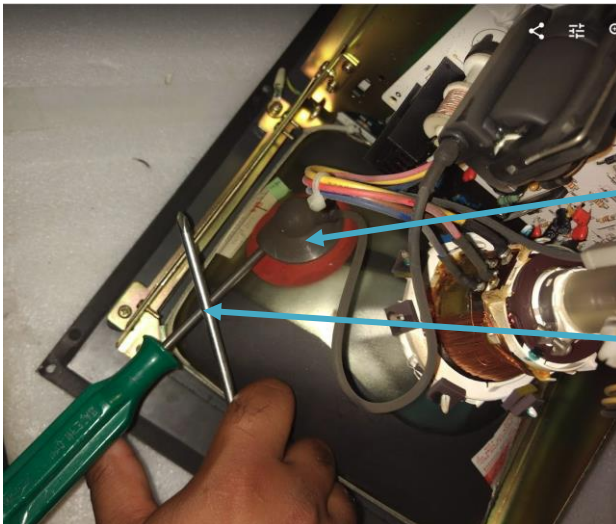
DETACT THE POWER
UNPLUG THE VIDEO
CABLE.

Step #3) Remove the CRT Frame with all the electronics from HMI by unscrews the screws holding it in place. Keep these screws for re- installation.



Unscrewing each of the following screws. Keep the screws for re- installation.

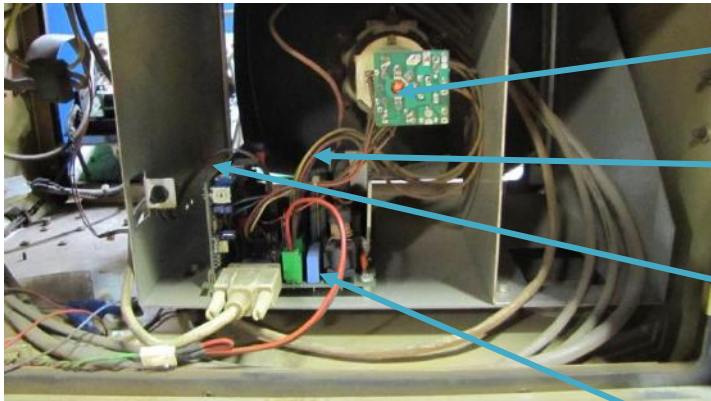
Step #4) Remove high voltage from the CRT by placing a screwdriver underneath the rubber of the anode lead and the other end touch metal, with another screwdriver put the tip onto metal and cross it with the first screwdriver. Remove the Anode Lead out of the tube.



Anode Lead

This method grounds out all high voltage from the CRT

Step #5) Unplug Neck Board, Yoke, Contrast & Brightness Connector. Remove Degauss around CRT frame & Remove the Driver Board.



Unplug Neck Board.

Unplug Yoke

Unplug Contrast & Brightness connector

Remove the Driver Board.

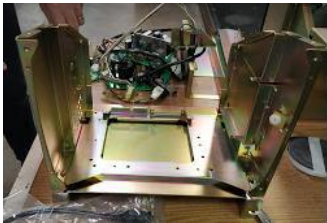
Remove Degauss around the CRT



Step #6) Unscrew the 4 screws holding the CRT monitor on the frame. Take the CRT out of the frame. Keep the 4 screws just removed for install your Monitech Monitor. Now you are left with the CRT frame.

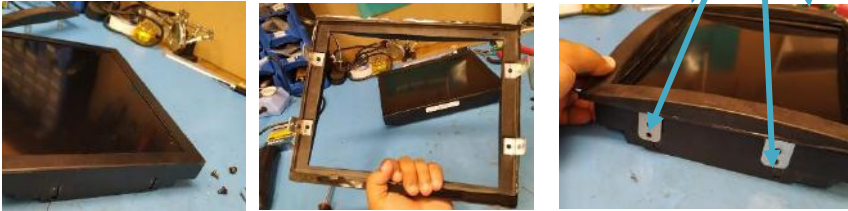


Unscrew the 4 screws holding the CRT monitor on the frame.



INSTALLATION:

Step #7) Take the Monitech monitor out of the box and unscrew the 4 screws on the side of the monitor & place the black bezel we sent with the monitor to centre the screen & mount it by using the screws you just took off.



Step #8) Now mount your Monitech monitor onto the old CRT frame, using the screws removed in Step #6.



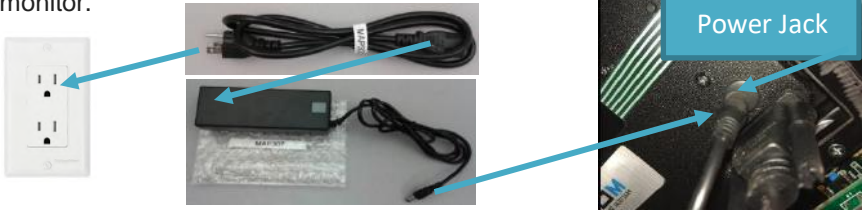
Now mount your Monitech monitor onto the old CRT frame, using the screws removed in Step #6

Step #9) Place the frame with your Monitech monitor back into your machine.

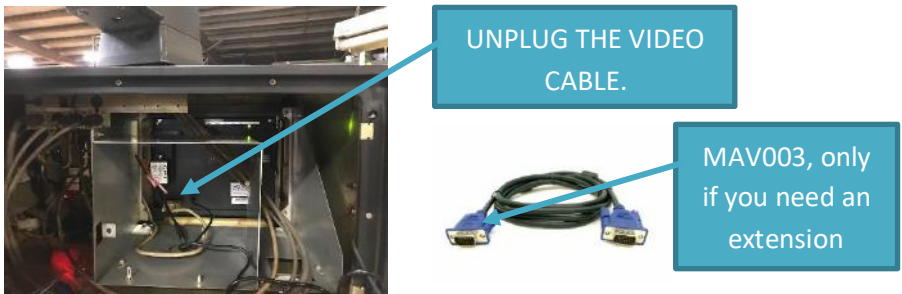


Screwing each of the following screws. To mount the frame with your Monitech monitor back into your machine.

Step #10) Open up the MK box and get MAP302 & MAP307. Plug MAP302 to a wall outlet and plug the other side into MAP307. Plug the jack into our monitor.



Step #11) Plug in the Video Cable that you unplugged in Step #2, if you need an extension use MAV003.



Step #12) Turn on main power & turn on machine power. Please Refer to our user guide to adjust screen settings. After screen is adjusted mount the front cover of your HMI back onto your machine.



Enjoy your rejuvenated Monitor.
Call us to order more HMI replacement parts

Keep your TRUMPF HMI's up and running!



LCD Upgrade Kit
for 12" Trumf
TC500
monochrome CRT



LCD Upgrade Kit for 12"
Bosch/Trumagraph monochrome CRT

For Technical Support, Call

Take2 Electronics

1-877-493-6105

Support@Monitech.com



20 Howard Place
Kitchener, Ontario N2K 4Z4
CANADA 519.725.2222
www.monitech.com

Keep your AB PanelView's up and running!



Replacement: LCD's, Backlight's, Keypad's & Touchscreen's for the whole 550 line.



Replacement: LCD's, Backlight's, Keypad's & Touchscreen's for the whole 600 line.



Replacement: LCD's, Backlight's, Keypad's & Touchscreen's for the whole 900 line.



Replacement: LCD's, Backlight's, Keypad's & Touchscreen's for the whole 1000 line.



Replacement: CRT TO LCD
CONVERSION's, Backlight's, Keypad's &
Touchscreen's for the whole 1200 line.



Replacement: CRT TO LCD
CONVERSION's, Backlight's, Keypad's &
Touchscreen's for the whole 1400 line.