

# LCD upgrade kit

**FOR YOUR 14" Allen-Bradley Panelview 1400 controller (2711-T14, 2711-K14) & 14" Allen Bradley T60 controller 6160PCD2**



**MONITECH**  
PRACTICAL SOLUTIONS FOR INDUSTRIAL DISPLAYS



# IMPORTANT:

## WARRANTY

Before using any MONITECH product please carefully review this Manual as well as any additional documentation provided with your shipment.

### Attempting any of the following will void product warranty:

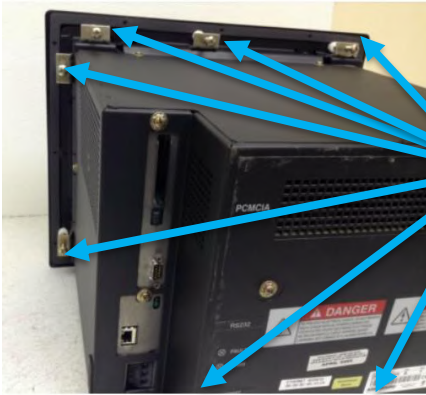
- unauthorized repairs or parts replacement
- inappropriate use or placement: exposing product to liquids, harmful gases, electrical shock, physical shock, temperatures beyond the range of -4°F to 140°F (-20°C to 60°C)
- use of electrical voltage other than 12V 4.16A (power supply and AC cable provided)
- Removal or modification of serial, product, or warranty labels.

	<b>WARNING</b>	
	<b>ELECTRICAL HAZARD DO NOT OPEN</b>	
TO AVOID ELECTRICAL SHOCK DO NOT OPEN PRODUCT CASING. UNAUTHORIZED REPAIRS OR PARTS REPLACEMENT ARE PROHIBITED AND WILL VOID PRODUCT WARRANTY. PLEASE RETURN TO MONITECH FOR REPAIRS.		

# REMOVAL:

Step #1) Turn off main power, turn off machine.

Step #2) Take the Panelview terminal out of the machine by unscrewing the clamps holding it in the machine. Unplug the communication cable, the power cable and the ethernet cable.



Unscrew the clamps holding the terminal in your machine.



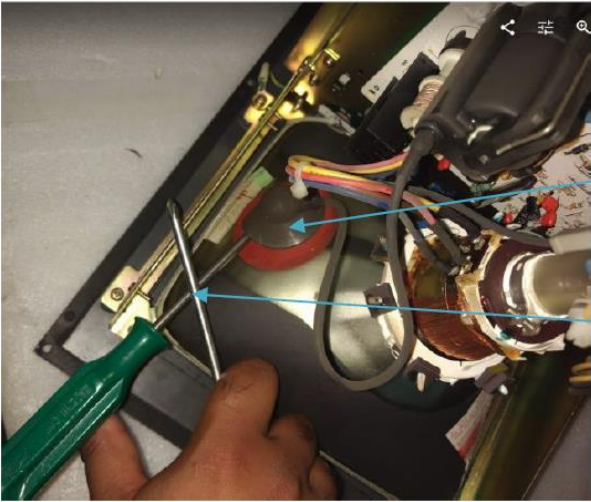
Unplug the communication cable, the power cable and the ethernet cable.

**Step #5)** Unscrew the screws holding the Back Cover on the terminal. Remove the back cover off. Keep the screw removed for re-installation.



Unscrew the screws holding the Back Cover on the terminal

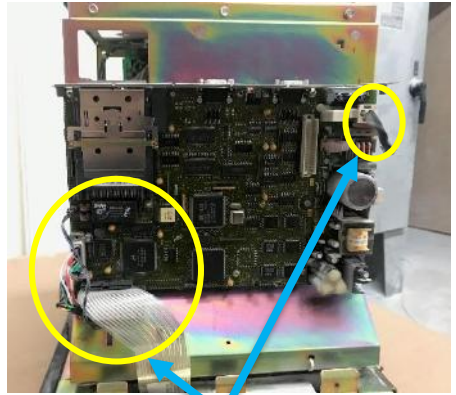
**Step #6)** Remove high voltage from the CRT by placing a screwdriver underneath the rubber of the anode lead and the other end touch metal, with another screwdriver put the tip onto metal and cross it with the first screwdriver. Then remove the anode lead by pushing one contact in so that it



Anode Lead

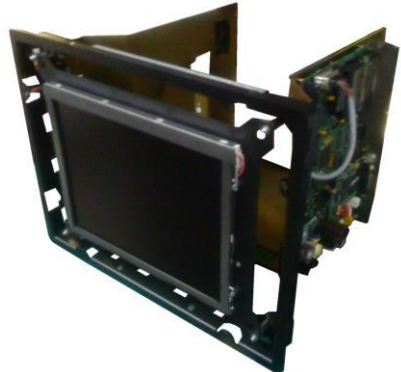
This method grounds out all high voltage from the CRT

**Step #7)** Unplug the video cable, the touchscreen ribbon cables, unplug the 2 pin AC power connector, and the other connectors. Unscrew the screws that hold the CRT Chassis in place, (keep screws for re-installation). Then take unscrew the nuts holding the CRT Chassis to the gold front frame.



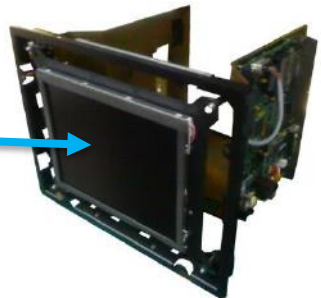
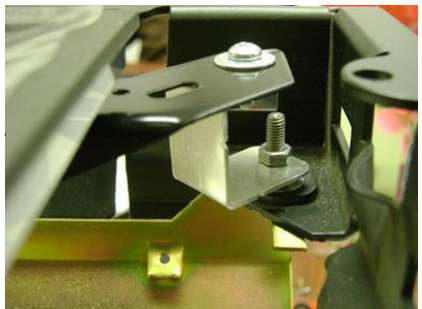
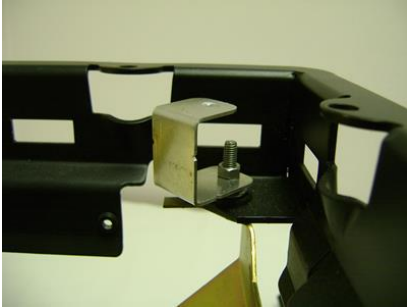
**Unplug the video cable, the touchscreen ribbon cables, unplug the 2 pin AC power connector, and the other connectors**

**Step #8)** Remove the neck board, disconnect the yolk & remove all other boards from housing they are not needed. Keep the 2-pin power cable & keep the side computer board.

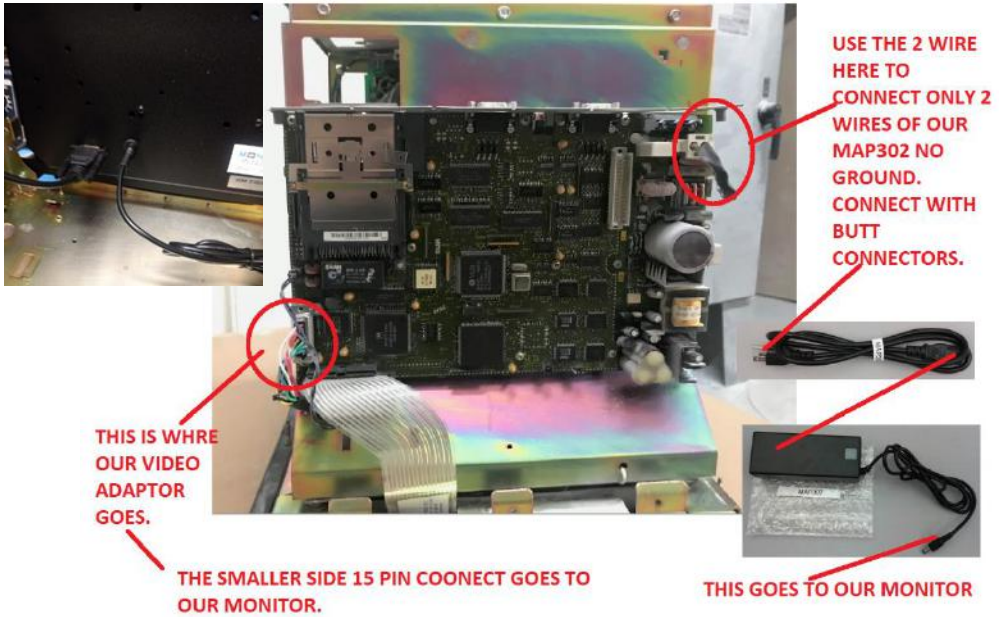


# INSTALLATION:

**Step #9)** Now you are left with the old CRT housing in which you are going to place your Monitech Monitor in. Install the four aluminum 'C' brackets (MH2003) onto the A-B 1400 Frame using the supplied M5 nuts to secure. Mount the LCD to the brackets using the supplied 8-32 screw and washer. You may have to break off plastic piece to allow LCD to sit as close to the front as possible. Mount the LCD in to the frame. If you have an ML121LL1400 you do not need to use the MH2003.



**Step #10)** Connect the MAV536 in to the Computer board, connect the VGA side into the monitor. Connect the MAP302 into where the 2 pin power connector is with butt connectors. Connect the MAP302 into MAP307, plug in the jack into the monitor.



**Step #11)** Re-install the gold frame to the front bezel (Refer to Step 7). Then test the monitor on the bench by using the AC power to the terminal. Adjust the image using the user controls, use the user guide to guide you.



**Step #12)** Re-install the back cover (Refer to Step 5 but follow instructions in reverse). Mount the terminal back into the machine, with the clamps. (Refer to Step 2 in reverse). Plug in the power, ethernet cable and the commination cable. Turn ON Main Power and Machine Power.

### Keep your AB PanelView's up and running!



Replacement: LCD's, Backlight's, Keypad's & Touchscreen's for the whole 550 line.



Replacement: LCD's, Backlight's, Keypad's & Touchscreen's for the whole 600 line.



Replacement: LCD's, Backlight's, Keypad's & Touchscreen's for the whole 900 line.



Replacement: LCD's, Backlight's, Keypad's & Touchscreen's for the whole 1000 line.



Replacement: CRT TO LCD CONVERSION's, Backlight's, Keypad's & Touchscreen's for the whole 1200 line.



Replacement: CRT TO LCD CONVERSION's, Backlight's, Keypad's & Touchscreen's for the whole 1400 line.

For Technical Support, Call

**1-877-493-6105**

[Support@Monitech.com](mailto:Support@Monitech.com)

# MONITECH

20 Howard Place  
Kitchener, Ontario N2K 4Z4  
CANADA 519.725.2222