

LCD upgrade kit

FOR YOUR ALLEN-BRADLEY PANELVIEW 1400E



ORIGINAL CRT



ML121QT1400E



ML121LL1400E

MONITECH
PRACTICAL SOLUTIONS FOR INDUSTRIAL DISPLAYS

Disconnect power. Do not cut any wires in the process of disassembly and installation.

Keep all original screws and cables for re-installation.

Remove rear cover.



Remove computer board and remove connectors in the controller.

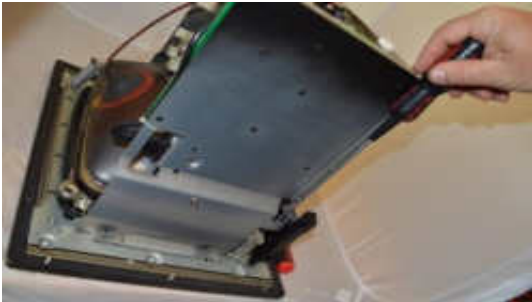


Remove housing screws.

Slide housing off.



Remove CRT mounting screws.



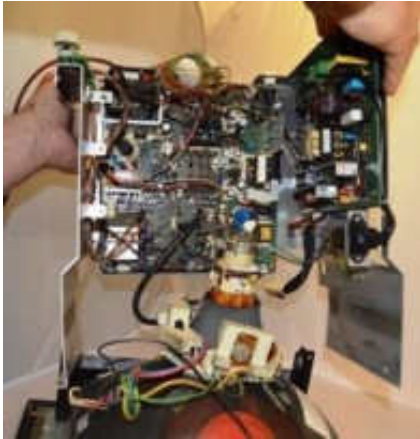
Remove high voltage rubber cup. Put a ground on your screwdriver first. Take care.



Remove CRT neck board and yoke connector.



Separate electronics assembly from the CRT.



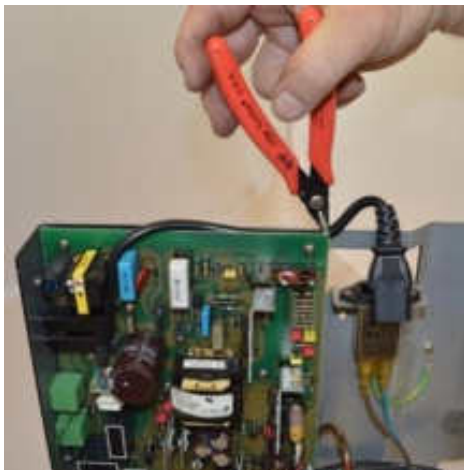
Remove CRT electronics and user controls, and dispose.



Keep the steel frame with the power board intact.



Keep the steel frame with the power board intact.
Cut tie holding AC line cord. Remove AC filter.



Remove CRT monitor and dispose. Keep front bezel assembly.



Separate mounting plate from front bezel.



Disconnect touch screen connector. Note the orientation of the pins, and mark with Sharpie.



Push plastic pins out to remove rubber bezel.
Dispose of rubber bezel.



Remove large aluminum standoffs and dispose.
Keep screws.



ML121QT1400E FOLLOW THESE STEPS

Unpack the new
Monitech LCD kit
ML121QT1400E.
MK001



Using original screws
plus spacers in your
kit, install LCD into
the same holes where
the CRT was
mounted.



To reattach the mounting plate with the front bezel, here's how the pins need to align.



Reconnect touch screen connector.



ML121LL1400E FOLLOW THESE STEPS

Unpack the new
Monitech LCD kit
ML121LL1400E.
MK001-LL1400E



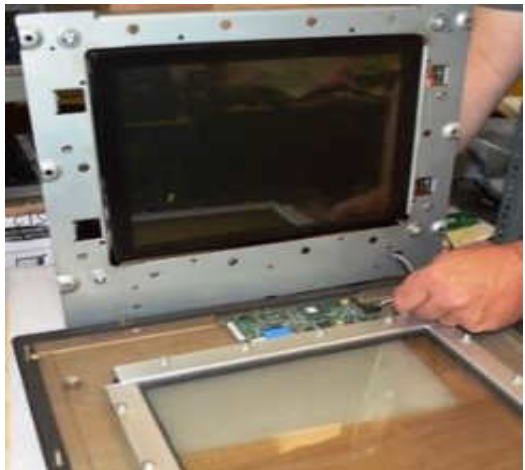
Take off black screws on the side of our monitor. Gently put our monitor in the same place your old CRT is and match the slots on the sides.



Screw the black screws in to fasten the brackets to the monitor. But keep screw a little bit loose.



Reconnect touch screen connector.



Slide original housing
over monitor frame.



Slide black cover
over unit.



Re-attach controller.



Attach video cable provided with your kit.
Attach ground strap.
Attach power cable.
Attach touch screen cable. A silkscreen on the board shows where the white wire goes.



Connect power supply provided with your kit.



Reconnect power cable, ground cable, and fan connector.

POWER CABLE
GROUND CABLE



FAN POWER CONNECTOR.



Re-attach back cover.



Enjoy your rejuvenated Monitor.
Call us to order more HMI replacement parts.

Keep your AB PanelView's up and running!



Replacement: LCD's, Backlight's, Keypad's & Touchscreen's for the whole 550 line.



Replacement: LCD's, Backlight's, Keypad's & Touchscreen's for the whole 600 line.



Replacement: LCD's, Backlight's, Keypad's & Touchscreen's for the whole 900 line.



Replacement: LCD's, Backlight's, Keypad's & Touchscreen's for the whole 1000 line.



Replacement: CRT TO LCD
CONVERSION's, Backlight's, Keypad's &
Touchscreen's for the whole 1200 line.



Replacement: CRT TO LCD
CONVERSION's, Backlight's, Keypad's &
Touchscreen's for the whole 1400 line.

For technical support, call

1-877-493-6105

support@monitech.com



20 Howard Place
Kitchener, Ontario N2K 2Z4 Canada
519-725-2222
www.monitech.com