

LCD upgrade kit

FOR YOUR 12.1" Sodick Mark I-XX & EX CRT
includes MK030



MONITECH
PRACTICAL SOLUTIONS FOR INDUSTRIAL DISPLAYS



IMPORTANT:

WARRANTY

Before using any MONITECH product please carefully review this Manual as well as any additional documentation provided with your shipment.

Attempting any of the following will void product warranty:

- unauthorized repairs or parts replacement
- inappropriate use or placement: exposing product to liquids, harmful gases, electrical shock, physical shock, temperatures beyond the range of -4°F to 140°F (-20°C to 60°C)
- use of electrical voltage other than 12V 4.16A (power supply and AC cable provided)
- Removal or modification of serial, product, or warranty labels.

	WARNING	
	ELECTRICAL HAZARD DO NOT OPEN	
TO AVOID ELECTRICAL SHOCK DO NOT OPEN PRODUCT CASING. UNAUTHORIZED REPAIRS OR PARTS REPLACEMENT ARE PROHIBITED AND WILL VOID PRODUCT WARRANTY. PLEASE RETURN TO MONITECH FOR REPAIRS.		

REMOVAL:

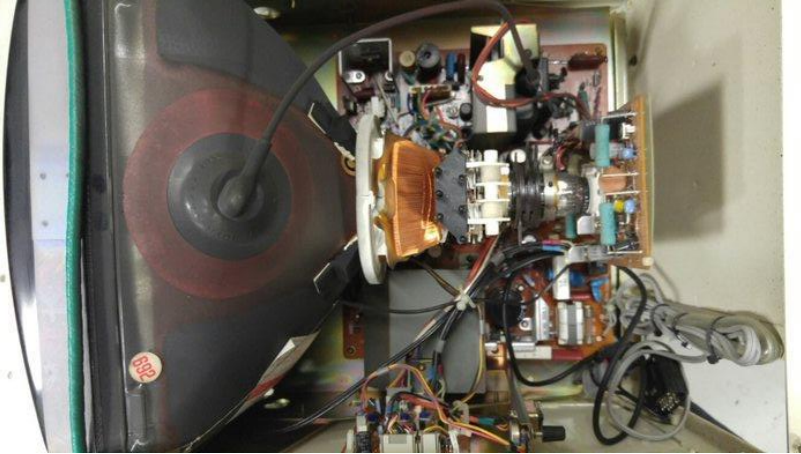
Step #1) Turn off turn off main power, turn off machine.

Step #2) Open up the cover of the HMI to get to the CRT. Unplug the controller power and communication cables from the CRT.

Unscrew these screws.
Keep these screws for
re-installation.



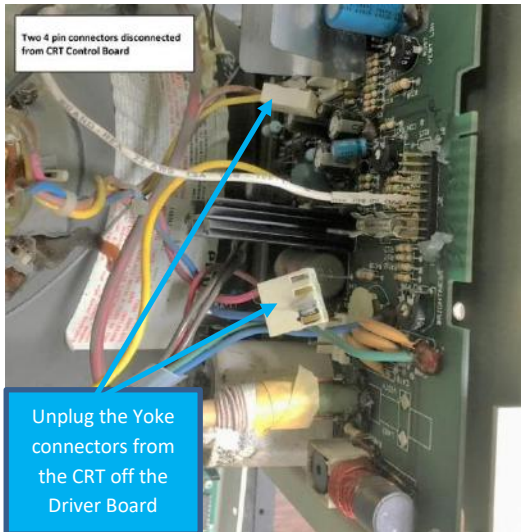
Step #3) Take the CRT out of the HMI by Unscrewing the mounting. Here is what you have.



Step #4) Take Anode Lead off the CRT with pliers. Unplug Degauss Connectors off the CRT. Unplug the Yoke connectors from the CRT off the Driver Board.



Take Anode Lead off the CRT with pliers



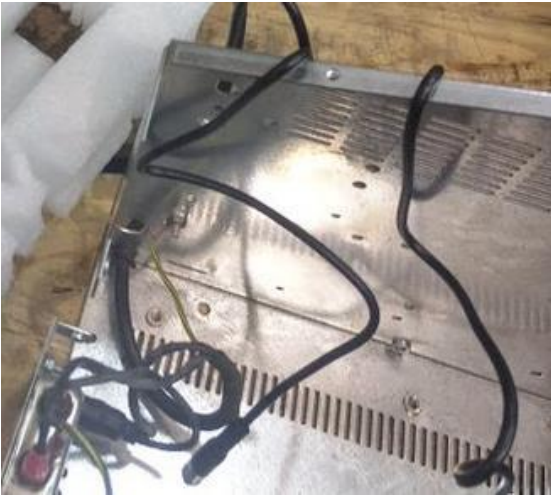
Two 4 pin connectors disconnected from CRT Control Board

Unplug the Yoke connectors from the CRT off the Driver Board



Remove degauss connectors

Step #5) Remove the Driver Board out of the HMI. Remove the CRT out of the HMI by unscrewing the 4 screws holding in place. Keep the 4 screws for installing your Monitech Monitor.



Take all this out of the CRT Housing

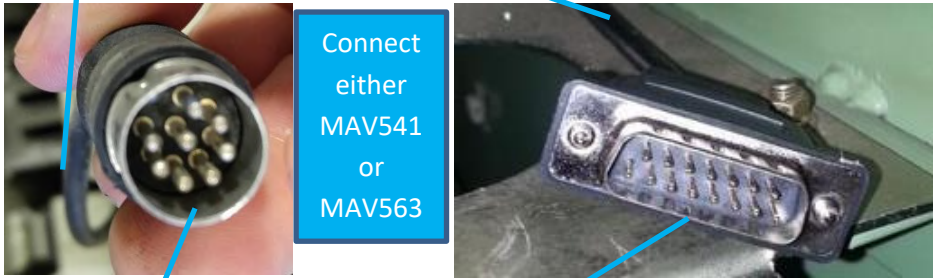
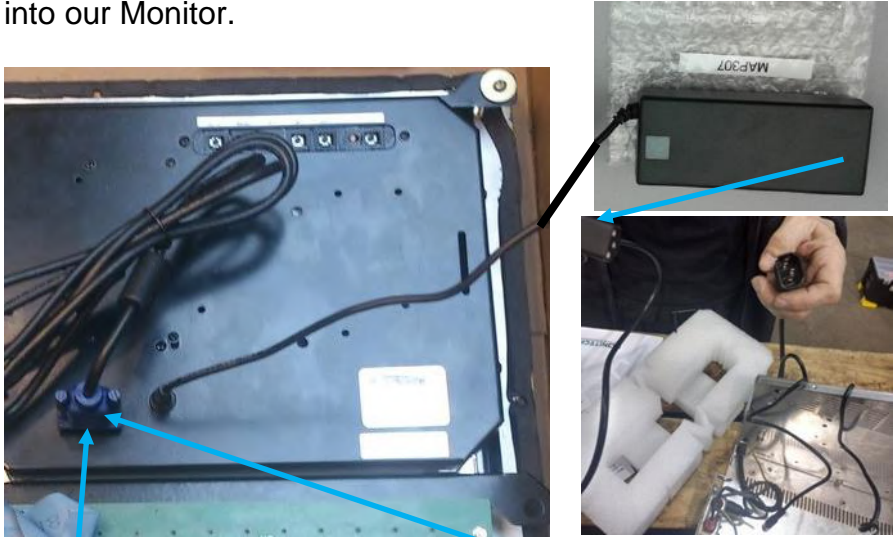
INSTALLATION:

Step #6) Put Monitech's Monitor in the housing using the four screws previously holding the CRT in place.

Screw in these 4 screws to mount the Monitech Monitor



Step #7) Use your MK030. Connect your power use MAP307, Plug in power jack into the Monitor. Connect either MAV541 or MAV563 depending on what your Controller uses for supplying video to the Monitor, plug in the 15 Pin side into our Monitor.



Step #9) Before Mounting the HMI back into the machine. Turn On power and Main Power to test the Monitor. If Video is on use the User Guide to Adjust the Screen. Then plug the controller power connector back into the power supply. Mount the HMI back into the machine. Then do Steps 1-3 in reverse.



Enjoy your rejuvenated display!!! From the Monitech Family we thank you for business.

DISPLAY PARTS

Your source for reliable after-market solutions



For Technical Support, Call
1-877-493-6105
Support@Monitech.com

MONITECH

20 Howard Place
Kitchener, Ontario N2K 4Z4
CANADA 519.725.2222