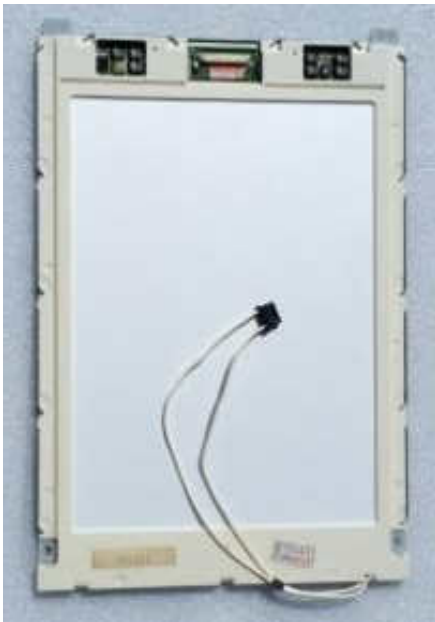


New LCD Replacement for your Okuma OSP7000, OSP700, U100 for 10.4" LCD (DMF-50260NFU-FW-7 & -FW-2) & (F-51430NFU-FW-AA & -FW-AEN)

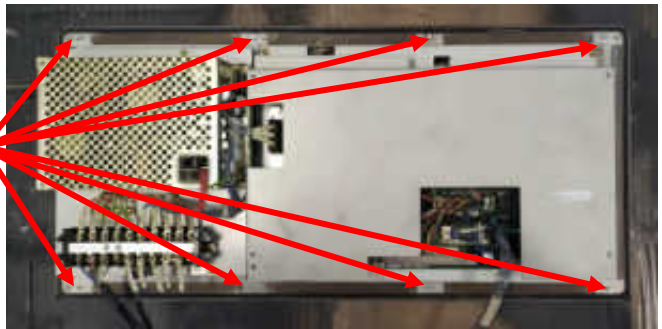


Step #1) Turn off power of machine & main power.

Step #2) Take out the HMI from the Machine, by unscrewing the 8 nuts from standoffs.



Unscrew
these nuts 8
for
unmounting.



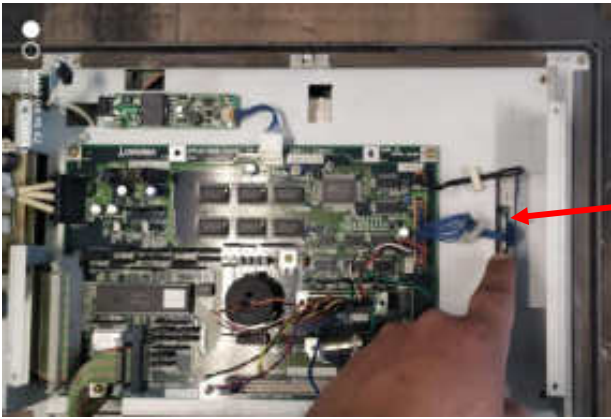
Step #3) Take off back cover the HMI by screwing the 4 screws.



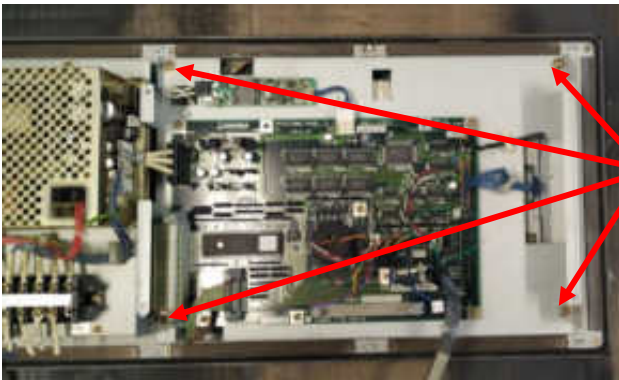
Step #4) Unplug CCFL connector from inverter & Unplug the LVDS cable from the LCD Panel. Then unscrew the 4 screws holding the LCD mounting plate in place.



Unplug this CCFL connector from the inverter.



Unplug this LVDS connector from the LCD.



Unscrew these screws to get to the LCD.

Step #5) Unmount the LCD Panel by removing the screws.



Step #6) Mount the new MP7000 or MB7000 in where the old LCD was.



Step #7) Mount everything back into place, connect all connectors you unplugged to re-assemble your HMI. (Connect the LVDS & CCFL Connector. (Follow steps 1-5 in reverse). Then power -up and now you can finally see your screen.



Now you can see your screen!!!

Keep your OKUMA Workstations + Other HMI's Up & Running!



ML121PN5020 - 12.1" LCD
Upgrade Okuma (OSP
5020L/M/G) for 12" CRT



ML121QT14JB - 124" LCD
Upgrade for Okuma CD14JBS



ML104QN7000 - 12" Okuma
OSP 7000 color



ML121QT14JB - 124" LCD
Upgrade for Okuma CD14JBS



MP3359 - NL6448BC33-
59/46/53 (Okuma OSP-E11L)



MB7000E - OKUMA OSP7000,
OSP700, OSP100U.

For Technical Support, Call
1-877-493-6105
Support@Monitech.com



20 Howard Place
Kitchener, Ontario N2K 4Z4
CANADA 519.725.222
www.monitech.com