

One touch and  
you are ready to go



**MONITECH**  
PRACTICAL SOLUTIONS FOR INDUSTRIAL DISPLAYS



# IMPORTANT

## WARRANTY

Before using any MONITECH product please carefully review this Manual as well as any additional documentation provided with your shipment.

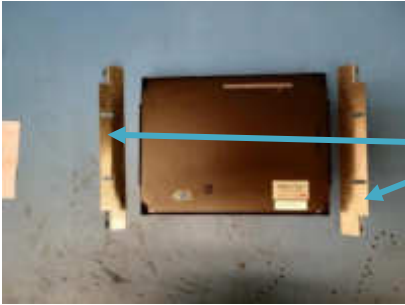
### Attempting any of the following will void product warranty:

- unauthorized repairs or parts replacement
- inappropriate use or placement: exposing product to liquids, harmful gases, electrical shock, physical shock, temperatures beyond the range of -20°C to 60°C (-4°F to 140°F)
- use of electrical voltage other than 12V 4.16A (power supply and AC cable provided)
- removal or modification of serial, product, or warranty labels.

	<b>WARNING</b>	
	<b>ELECTRICAL HAZARD DO NOT OPEN</b>	
<p>TO AVOID ELECTRICAL SHOCK DO NOT OPEN PRODUCT CASING. UNAUTHORIZED REPAIRS OR PARTS REPLACEMENT ARE PROHIBITED AND WILL VOID PRODUCT WARRANTY. PLEASE RETURN TO MONITECH FOR REPAIRS.</p>		

# 1. Mounting Brackets

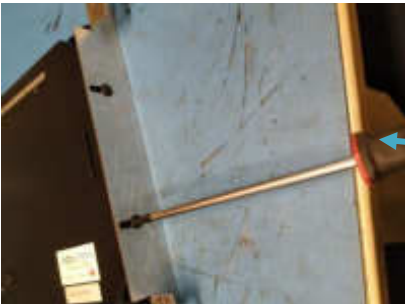
This line of Monitech Product has Mounting brackets that you will attach onto the side of our monitor by unscrewing the screws on the side and placing the brackets on by screwing in the screws that you just removed. These brackets help you mount the monitor to the old CRT frame of your application.



Take the set of brackets out of the monitor box. The mounting ears should be towards the back of the monitor.



Use a screwdriver to unscrew the screws on the side of the monitor.



Place the brackets where the slots are. Use the screws previously taken off to fasten the brackets.

## 2. Just press **AUTO**.

Once you have mounted your new Monitech LCD into your control panel with the video cable attached, the indicator light on the back of the monitor may turn green. This means the video power is on. If the green light is off, press the I/O button to power it up.



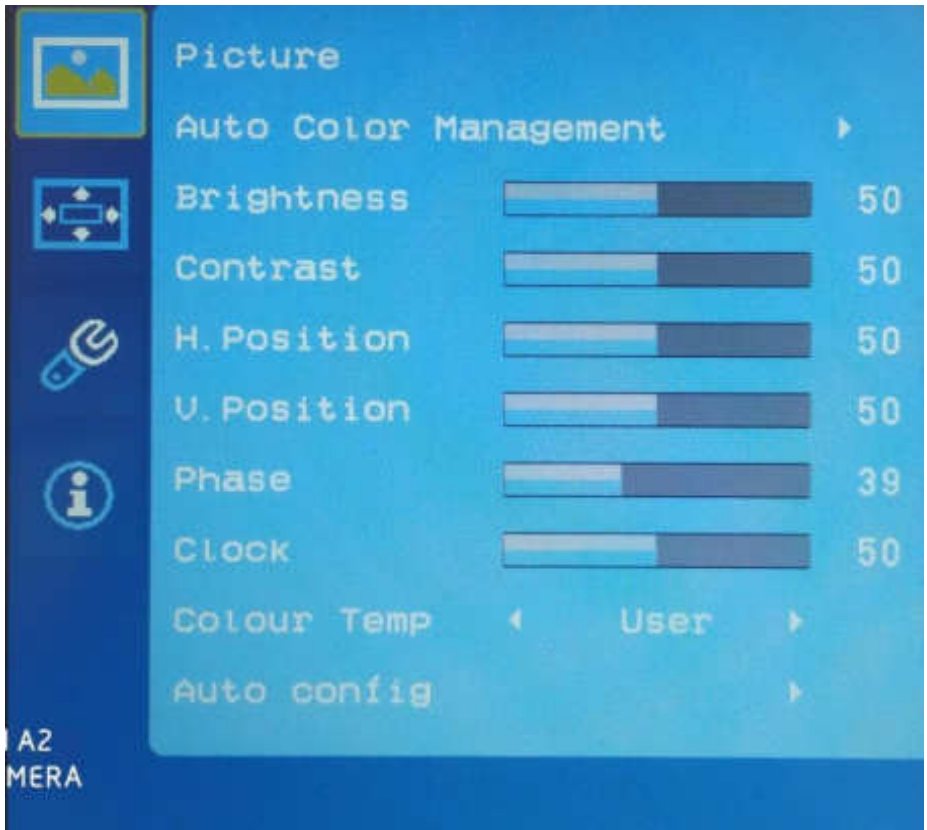
Now press **AUTO** on the 6-button menu found on the back of the LCD. After a few seconds, the screen will

center the image and automatically adjust the image size, color, brightness and contrast.

That's all there is to it! Your LCD is ready to go.

### 3. Adjust brightness, contrast & color temp.

Use this menu to adjust the brightness, contrast, and color. Use "Color adjust" to change the ratios between red, green, and blue. Use "Color Temp" to set color saturation. (If you select USER and the color gets messed up, go to the MISC menu, and select RESET.) Press MENU and the PICTURE menu will appear:



Now press the up ▲ or down ▼ buttons to select what feature you would like to change.

Press **MENU** to enter.

Then use the up ▲ or down ▼ to adjust the value of your selection.

To exit, press AUTO until it goes away.



## 4. Adjust Picture

Fine-tune the image by adjusting the horizontal (H) and vertical (V) positions as well as the phase & clock.



Vertical lines are interrupting the image.

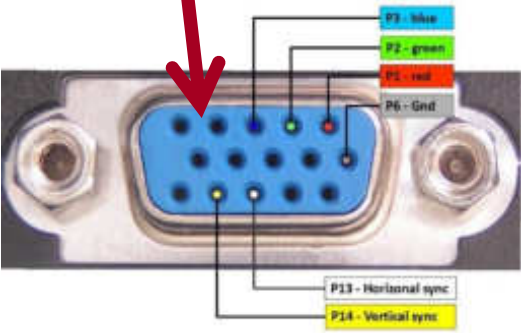


In the 3-button menu, select WIDTH and adjust values until the lines disappear. When you have done all you can do with this setting, select PHASE to fine-tune it.



# 5.Video connector

This picture shows the value for six pins on the video connector at the back of the monitor. (The other pins have no application.)



# Troubleshooting

## **My screen is black.**

Ensure the DC power cable is fully inserted into the monitor receptacle. Use only 12V 4.16a power supply (+ on center pin). Ensure the power supply is securely connected to a 120-240V AC power source and that the green light indicates it is ON.

## **I am seeing lines through my video.**

Press the AUTO button at the back of the monitor.

## **How do I increase the brightness on the screen?**

Press MENU, then MENU again to open the COLOR menu. Adjust the brightness from there.

## **How do I deal with intermittent video issues?**

Ensure the video cable does not run close to high-power devices or cables. Ensure all cables are securely seated and free of damage.

**For Technical Support, Call  
1-877-493-6105**





20 Howard Place  
Kitchener, Ontario N2K 2Z4 Canada  
519-725-2222  
[www.monitech.com](http://www.monitech.com)  
[sales@monitech.com](mailto:sales@monitech.com)