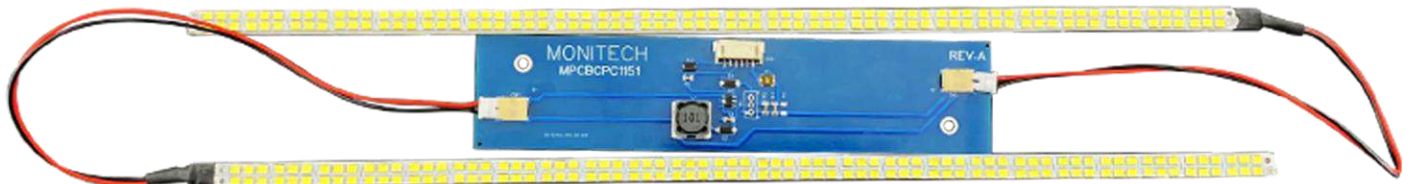




QUICK INSTALL GUIDE

MONITECH MB1700P

New Backlight Inverter for Allen Bradley Versa View 1700P



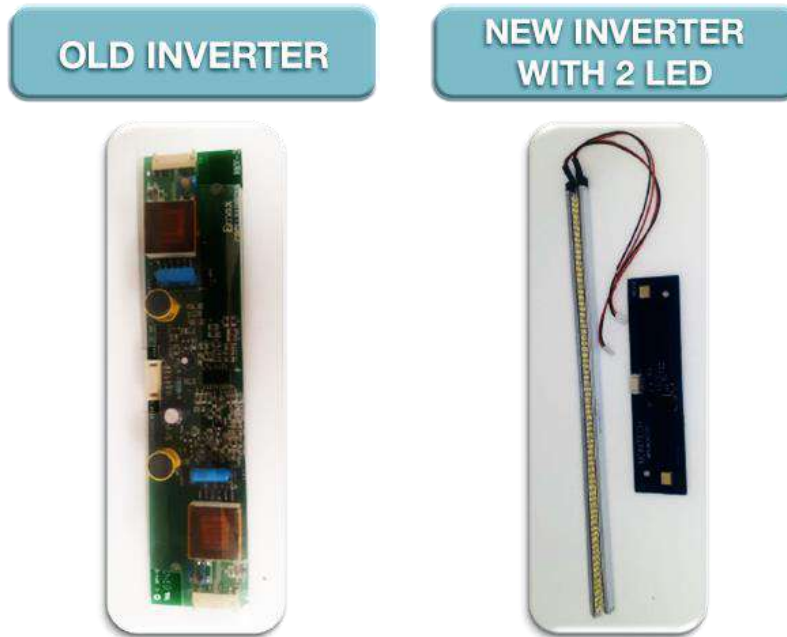
PRECAUTIONS

 <p>ATTENTION</p>	<p>Disconnect power from the terminal before installing or replacing any components. Take care not to touch any of the exposed electronic components during installation.</p>
 <p>ATTENTION</p>	<p>Work in a static free environment and wear a properly grounded electrostatic discharge (ESD) wristband. Be careful when touching any of the exposed electronic components to prevent damage from ESD.</p>

KIT CONTENTS:

Part Number	Item	QTY
MPCBCPC1151	Inverter PCB Board	1
MPCB17-08370AB, 8mm	LED Strip	2
HARDWARE	M3 Pan Head Screws	2

REFERENCE



REMOVAL

- Turn off the main power, then turn off the machine.
- Remove the unit from the main Machine.



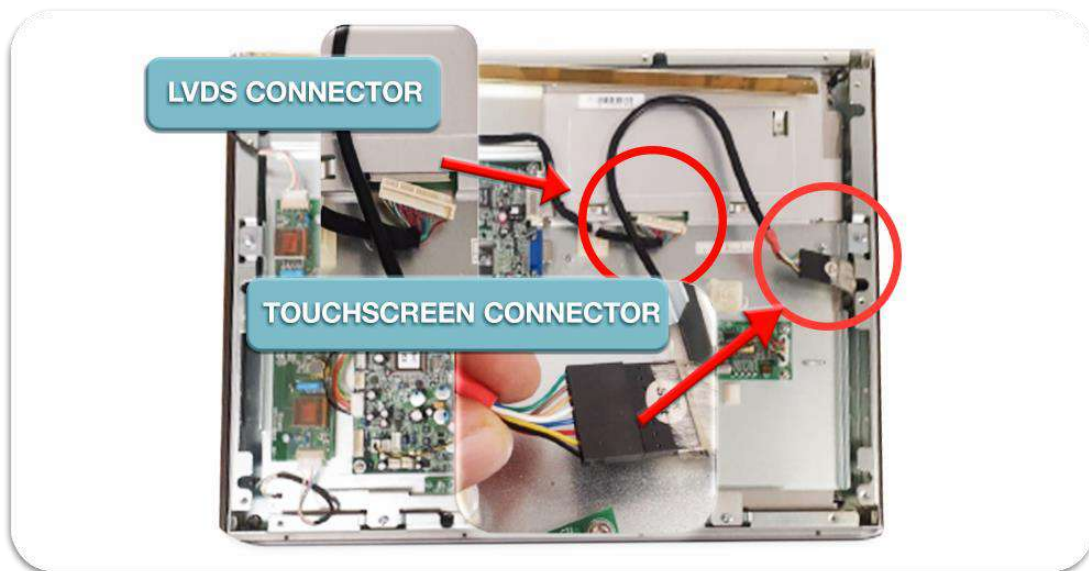


- Remove the LCD front panel from the unit.

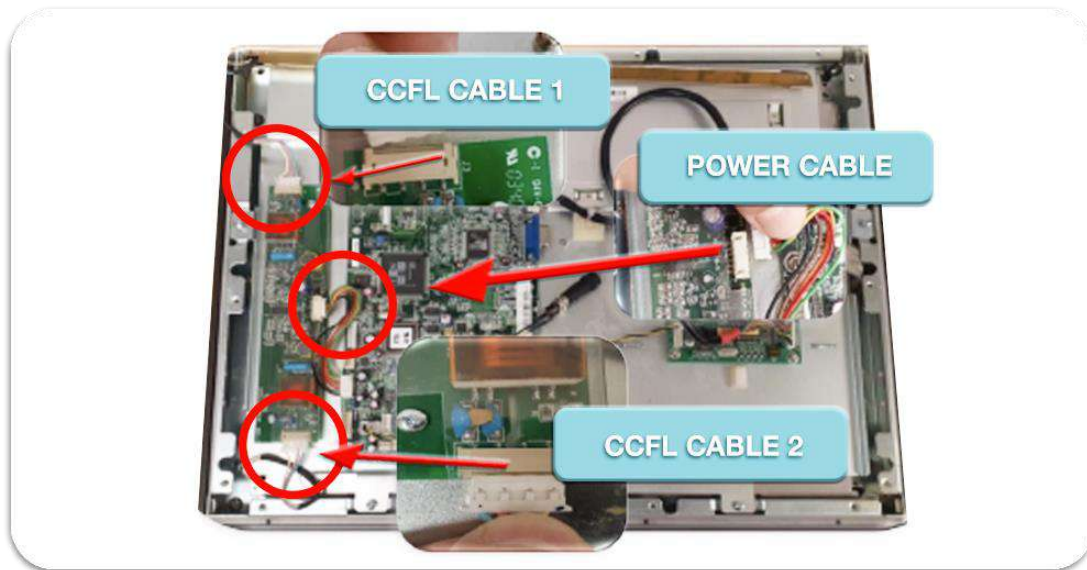




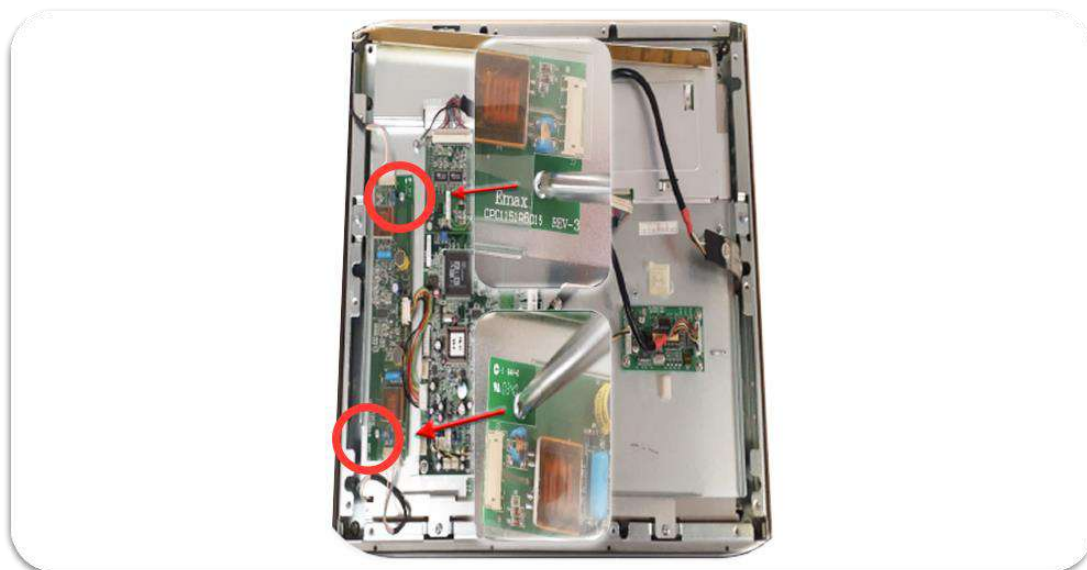
- Disconnect the LVDS connector from LCD panel, then disconnect the touchscreen connector.



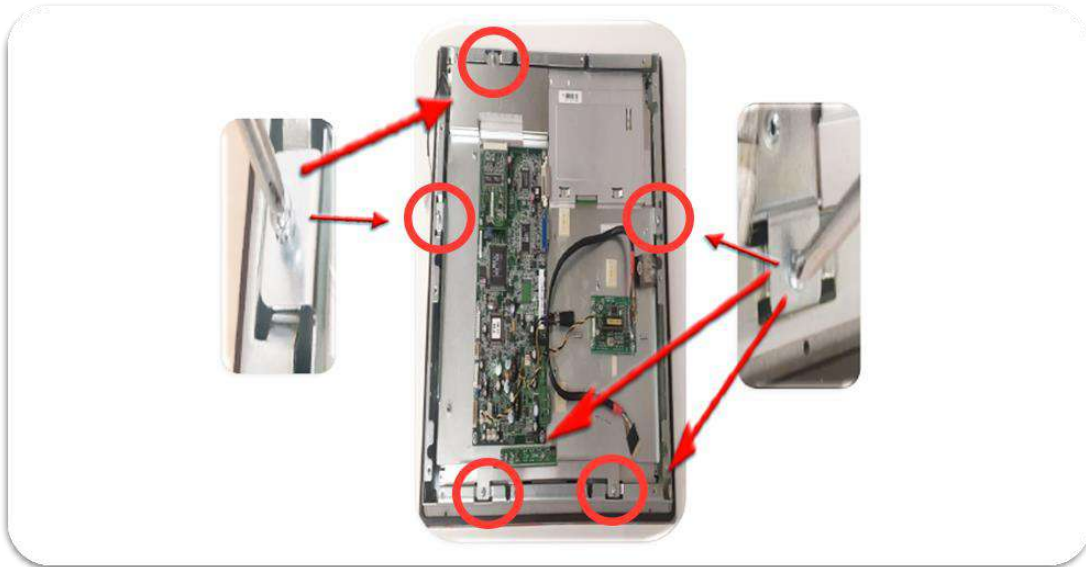
- Unplug the CCFL bulb cables from the inverter, then disconnect the inverter power cable.



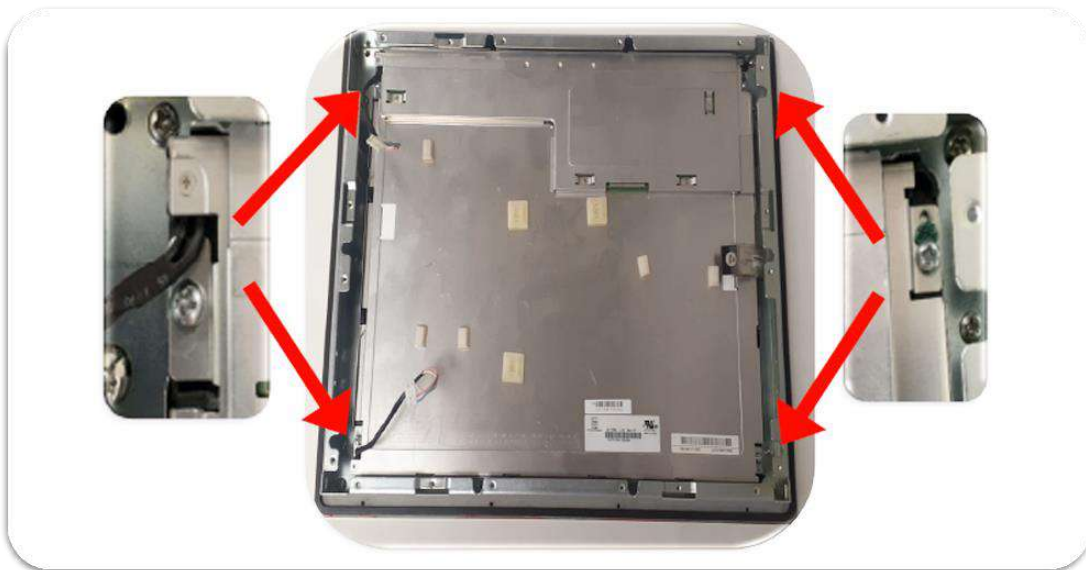
- Remove the old inverter by unscrewing the 2 screws as shown.



- Unscrew the 5 screws to remove the PCB board and the metal shield.



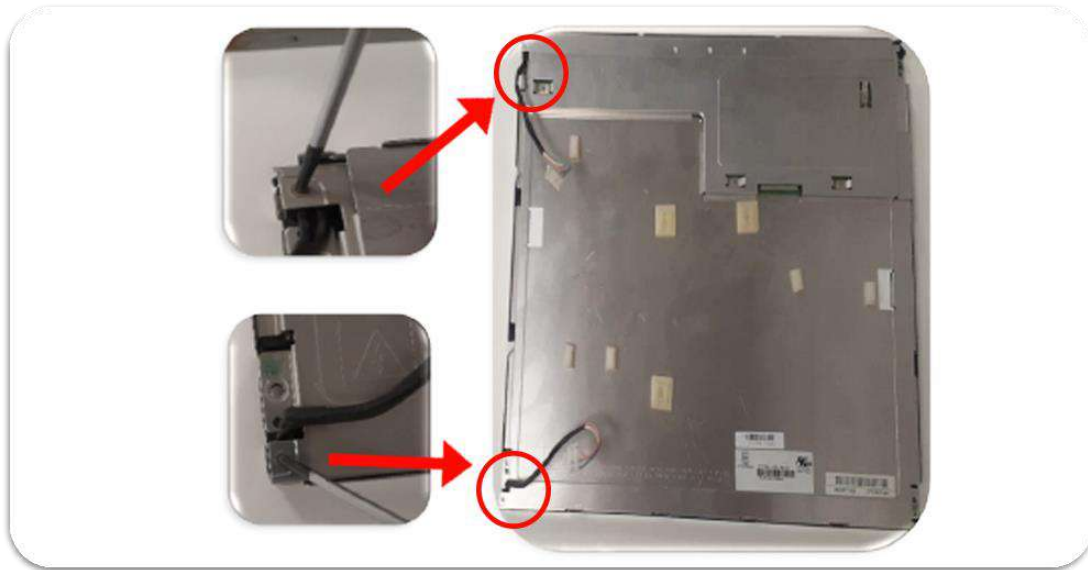
- Remove the LCD panel by unscrewing the 4 screws, then pull up the LCD panel from the metal frame.



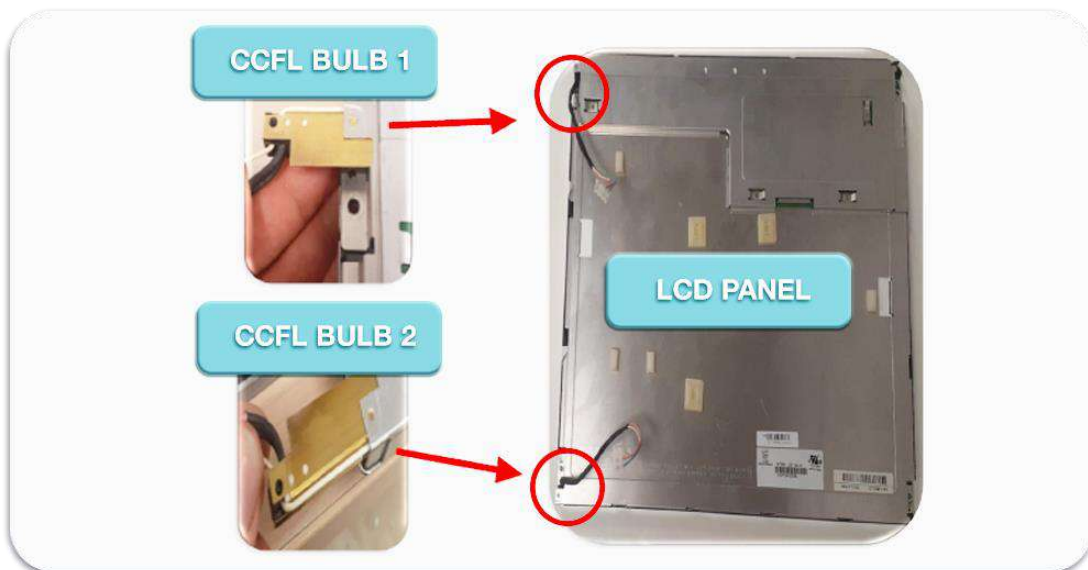
- The LCD panel and the metal frame with the touchscreen.



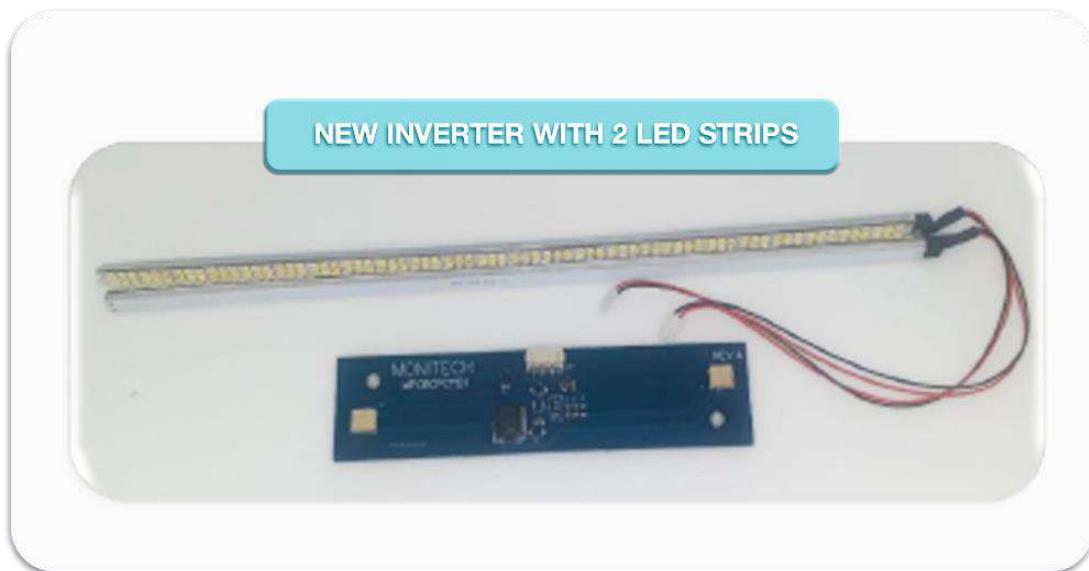
- Remove the CCFL bulb from the LCD panel by unscrewing the 2 screws as illustrated below.



- Pull up the CCFL bulbs from the LCD housing.



- The new Inverter with LED strips.



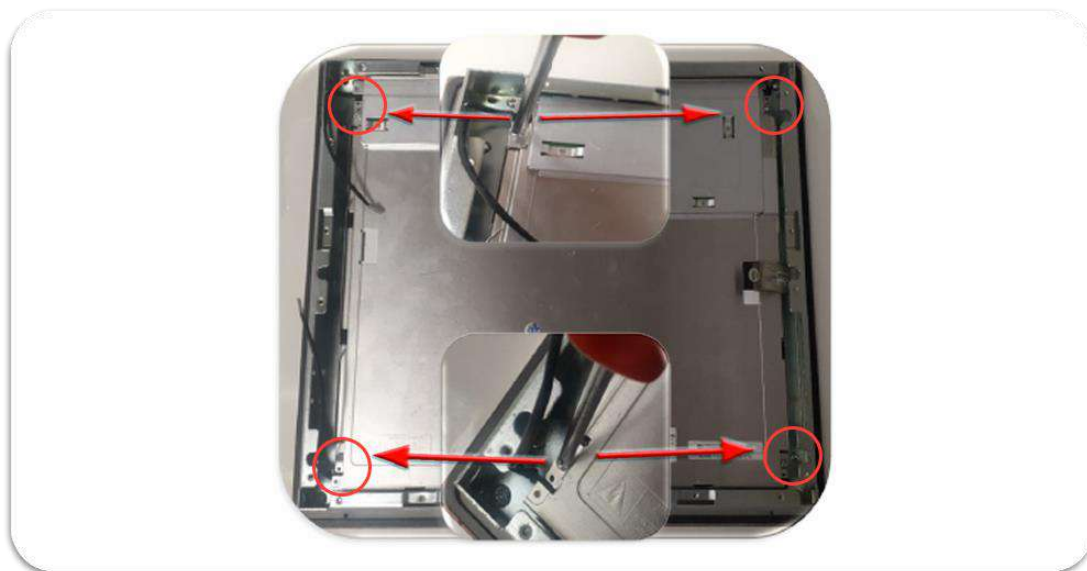
- Take the LED strips and slide them into the LCD housing all the way.



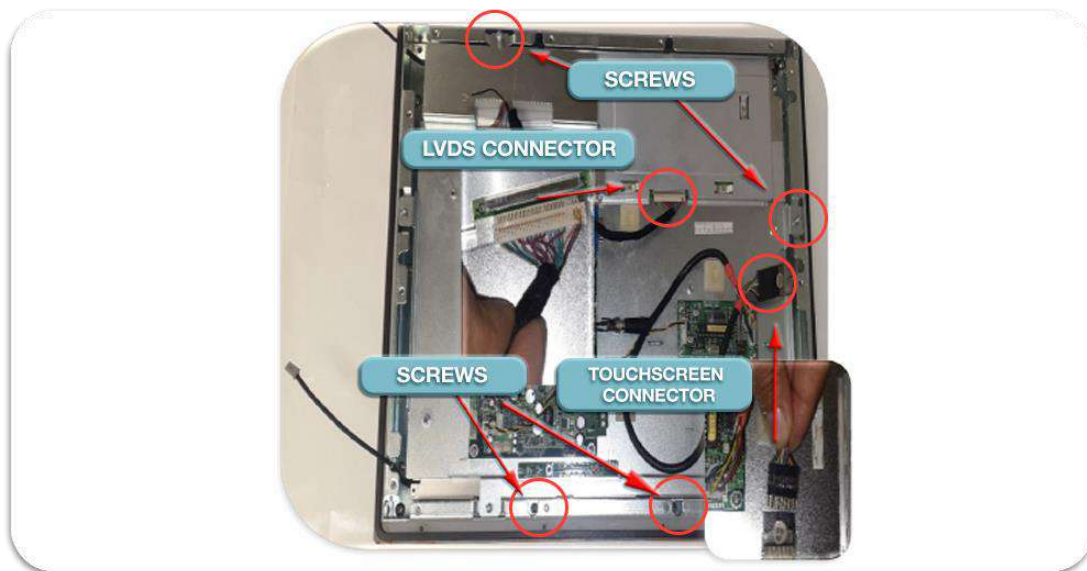
- Continue sliding the LEDs all the way until they fit completely as shown in the picture below.



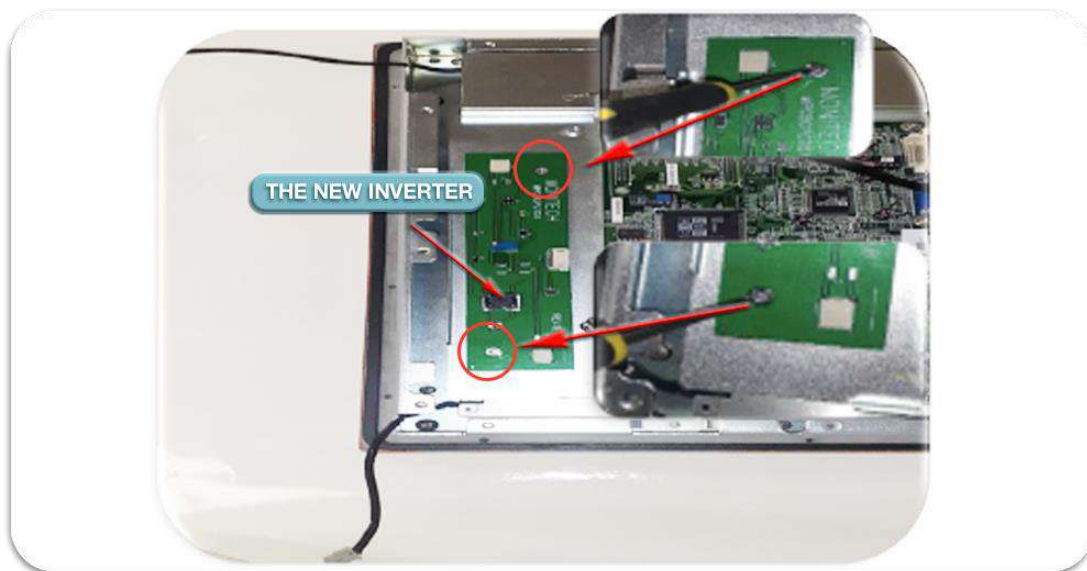
- Place the LCD panel ack into the metal fame by screwing the 4 screws.



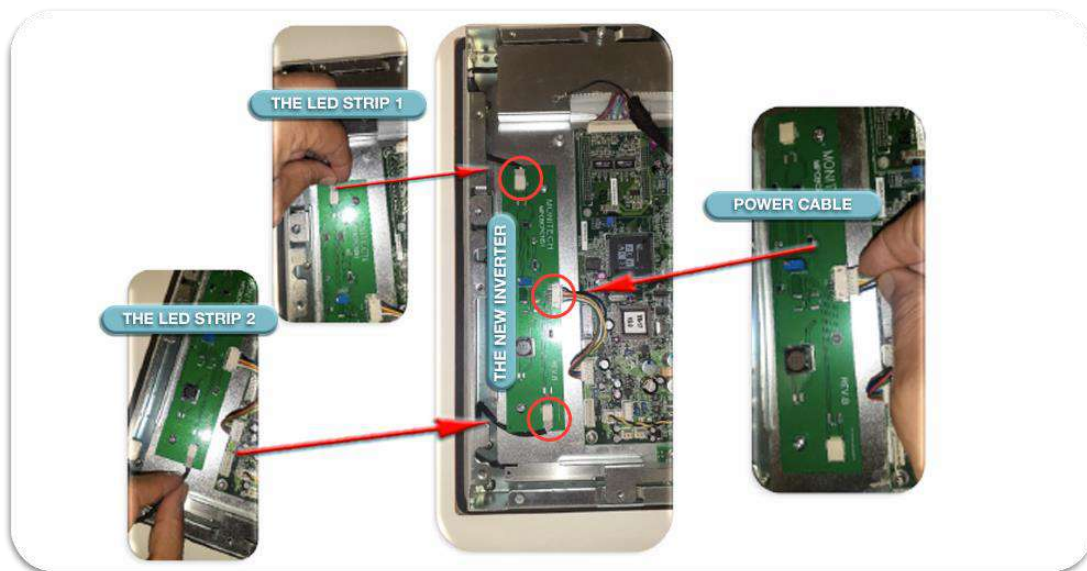
- Put back the PCB board with the metal shield by screwing the 5 screws, reconnect the touchscreen connector and then reinsert the LVDS connector.



- Insert the new inverter where the old inverter was located and secure it by using 2 screws as shown.



- Insert the LED strips cable to the connectors of the inverter and then insert the power harness to the power connector of the inverter.



- The new inverter after it has been installed.



- After you install the front panel that has the new inverter to the main unit, and before you power up the unit, make sure everything is connected properly and safely to power up.



**Do you need help
with this product?**

Please contact:
1877-493-6105
monitech.com/support/technical-support/